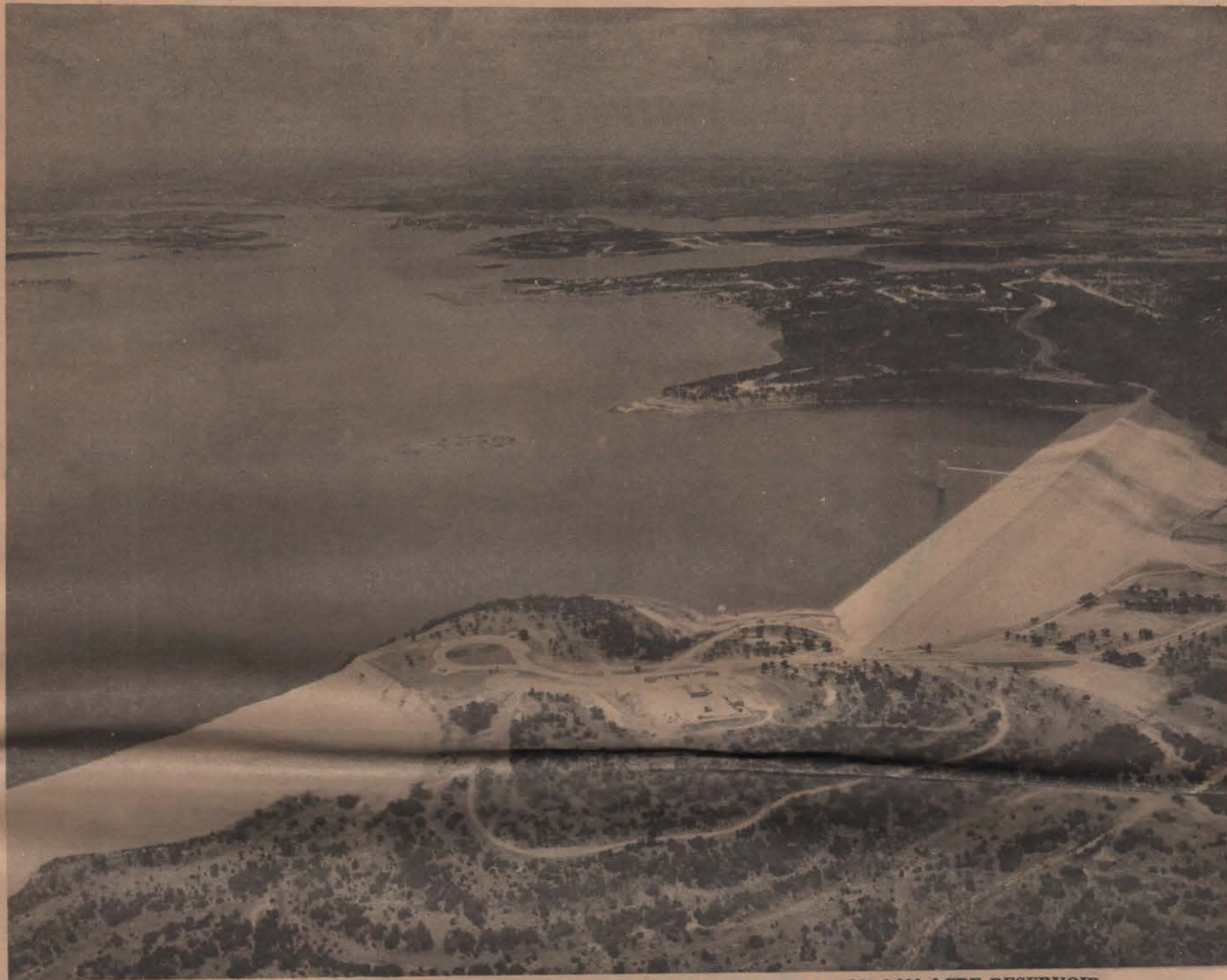


CANYON LAKE

YEAR AROUND RECREATION IN THE TEXAS HILL COUNTRY



CANYON DAM CORRALS THE WATERS OF THE GUADALUPE RIVER IN AN 8,000-ACRE RESERVOIR

Lake Area Erupts In Change, Growth

New Canyon Lake has brought a vast geographical change to the Hill Country of Comal County, and erupting all about the water wonderland are massive economic and physical changes.

Ten years ago, ranchland in the area was selling for \$50 to \$80 an acre. Today, the same property is selling for as much as \$10,000 a lot.

In 1956, there were only four country stores in what is now the lake area — Kanz's Sattler, Startz, and Hancock.

Now, at least 100 commercial enterprises are operating about the lake, and more are planning, building, or ready to open.

Roads are being broadened and straightened, erasing the winding routes which no longer can handle the streams of traffic.

A road building program launched in the area by the Texas State Highway Depart-

ment will cost from \$2½ million to \$3 million.

Ultimately, the construction will encircle Canyon Lake. All of it should be completed in another five years.

This is in addition to all the miles of park and access roads built by the federal government.

And hundreds of miles of paved streets in developments have supplemented country roads. They wind in and out of thousands of acres of subdivisions.

Houses dot the hills and are cropping up at every turn of land which seldom saw a human from one week's end to the next not so long ago.

With the lake now at two-thirds of its full volume and within 25 feet of the conservation pool crest, visitors are patronizing the partly finished park areas at a rate which will total 1,000,000 annually, according to a Corps survey.

A rate of 2,000,000 visitors a year is the Corps estimate when maximum pool level is reached and recreation facilities completed, a time rapidly approaching.

Guadalupe Valley Telephone Co-Op which serves the Canyon Lake area expects to increase its subscribers six times over during the next five years. They base their projection on a survey completed last fall.

The number of cooperative patrons has doubled between 1956 and 1966.

Despite all the growth, there are still additional services needed in the Canyon Lake area which offers opportunities for the enterprising.

The startling effect of Canyon Lake area development on property values is revealed in the total assessed value of Comal County rural property for Rural High School District purposes.

Most Beautiful Project In Southwest, Corps Says

The US Army Corps of Engineers has described Canyon Lake as having the most beautiful natural setting of all its projects in the Southwest.

Canyon Dam has confined the spring-fed Guadalupe River in a vast lake among wooded slopes and rugged bluffs.

A land of abundant springs and good hunting and fishing, the Hill Country of Comal County was a favorite of the Comanche Indians before the encroachments of civilization.

Temperatures are moderate, and average rainfall keeps the hills and valleys green year around.

The healthful climate of the area was a major inducement for the first settlers, Germans, who spread out into the hills from New Braunfels soon after

In 10 years, the assessed valuation has jumped from \$6.9 million to \$36.5 million in 1965. The school tax office bases the 1965 figure on a 70 per cent evaluation. Comal County assessed value for 1965 is \$8.9, based on a 30 to 35 per cent evaluation. Both school district and county used the same figure in 1956.

its founding in 1845 by Prince Carl Solms Braunfels.

Giant cypress trees border the Guadalupe and the creeks which feed it.

Standing among them are pecan, sycamore, and willow. Here and there a few black walnut remain.

On the slopes and hills stand Spanish oaks and great live oaks. The local "cedar," a variety of juniper, scents the air. In spring, redbud trees and purple mountain laurel add color to the landscape.

Refreshing breezes, hills flooded with sunshine, valleys deep with shade, and cool waters create a delightful spring and summer vacationland.

In fall, the air is crisp when hunters come to pursue a-bounding deer and wild turkey.

Driving through the Hill Country ranchland, you pass herds of prize beef cattle and flocks of sheep and angora goats.

Elevations in the area of Canyon Lake vary 1,000 feet, creating a spectacular panorama from vantage points surrounding the reservoir.

SEE THE BEST...

THE OAKS

On Canyon Lake - In the refreshing Comal
County Hill Country - A beautiful complete
Waterfront Subdivision

Large tree-covered homesites with utilities. Spacious parks at the
widest part of the lake. Miles of view. Contours definitely
established to show water and flood lines.

*Swimming Pool, Paved Roads, Water System,
Sensible Restrictions.*

LOTS FROM \$795

TERMS AVAILABLE

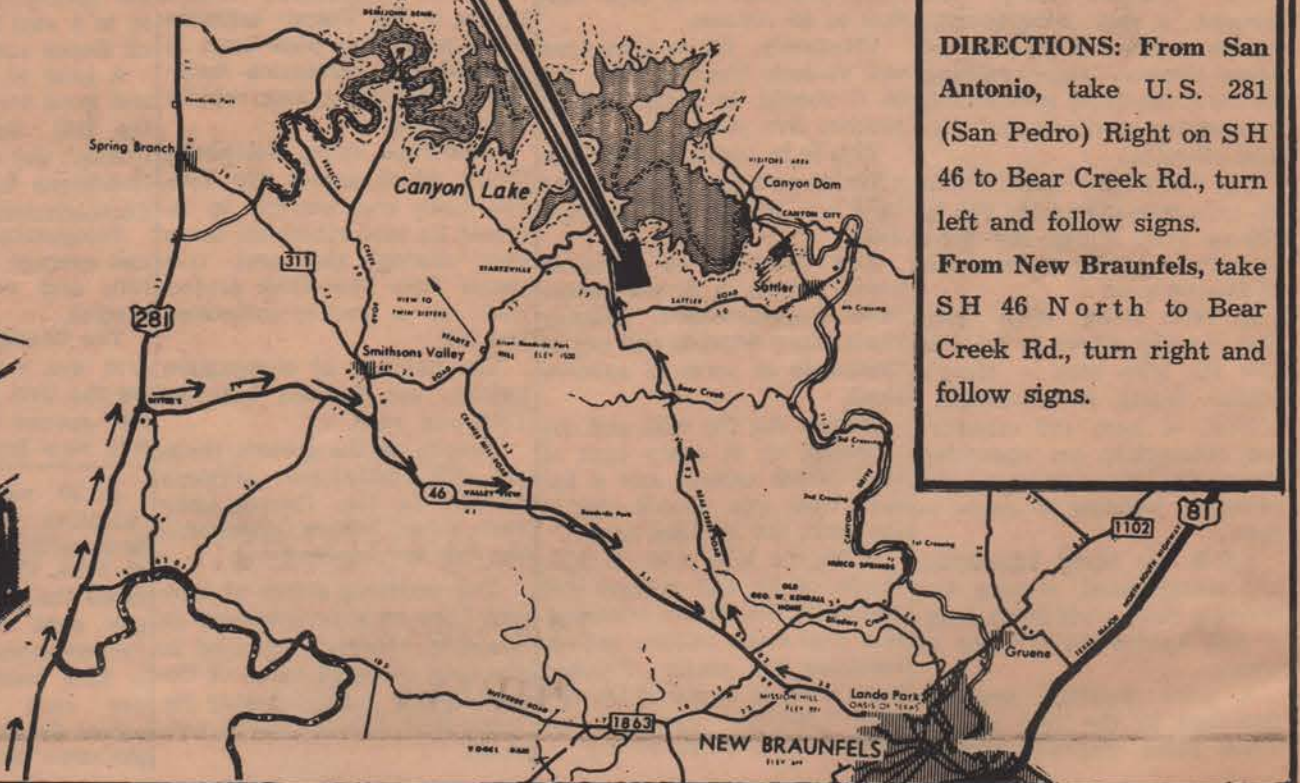
Courteous Salesmen On Duty Week-ends!

CANYON ENTERPRISES

P. O. BOX 724 — NEW BRAUNFELS, TEXAS

Area Code - 512

MA 5-6722 — MA 5-4731 — MA 5-5237



DIRECTIONS: From San Antonio, take U.S. 281 (San Pedro) Right on SH 46 to Bear Creek Rd., turn left and follow signs. From New Braunfels, take SH 46 North to Bear Creek Rd., turn right and follow signs.

General Contractors

HOMES

COMMERCIAL

REMODEL

PLAN SERVICE

LOAN ASSISTANCE

PERSONAL SUPERVISION

Quick Estimates

25 Years Experience

Guaranteed Products

Headquarters for Do-it-yourselfers

IF YOU WANT US TO:

BUILD FOR YOU

OR

BUILD IT YOURSELF

OR

BUY IT ALREADY BUILT

CALL

Helm

**Lumber &
Building Co.**

SATTLER

WO4-3620

NEW BRAUNFELS

MA5-6222

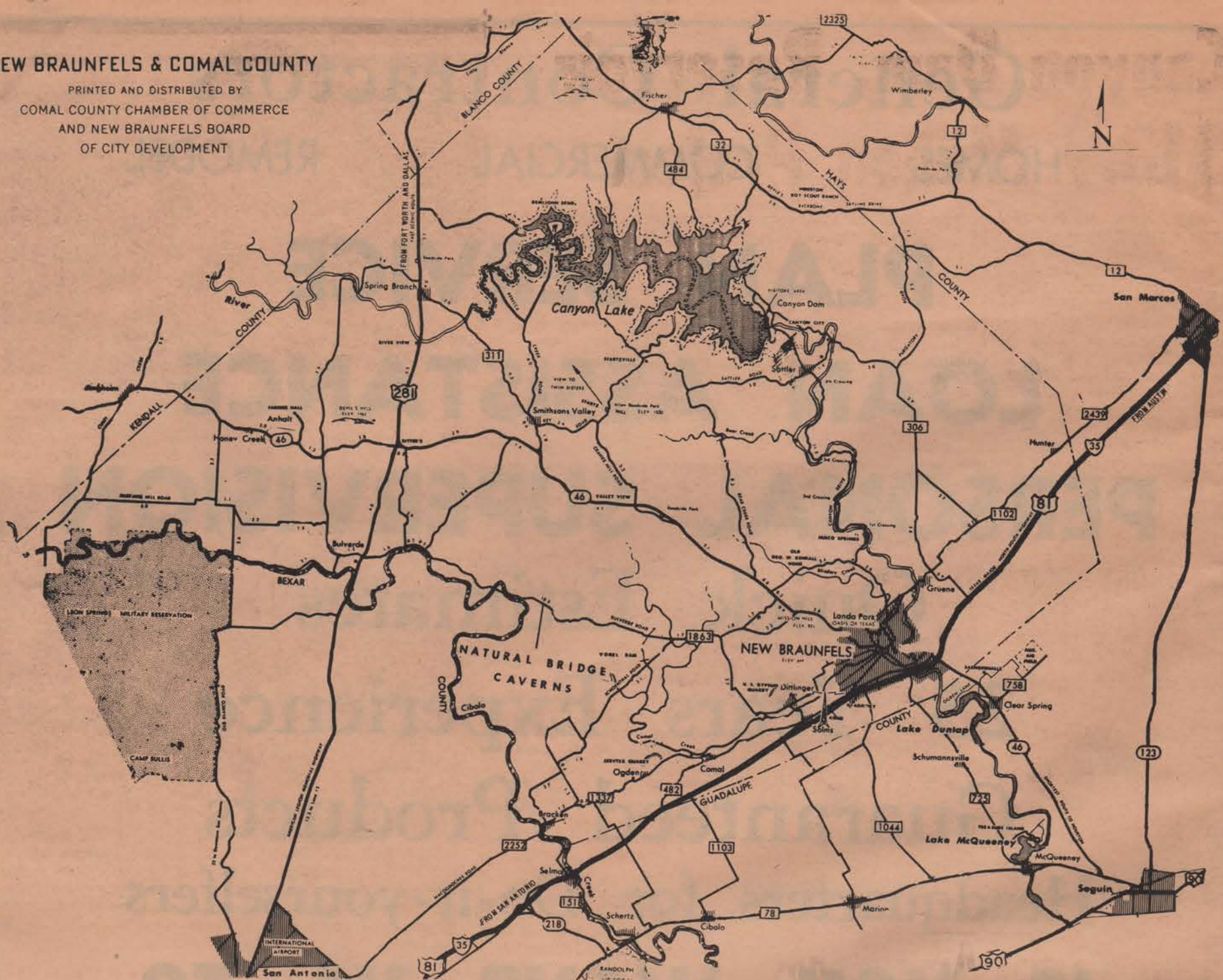
1617 HIWAY 81 W.

STARTZVILLE

OPENING SOON

NEW BRAUNFELS & COMAL COUNTY

PRINTED AND DISTRIBUTED BY
COMAL COUNTY CHAMBER OF COMMERCE
AND NEW BRAUNFELS BOARD
OF CITY DEVELOPMENT



From Paper to Bulldozer 20 Year Span For Dam

Canyon Dam was a long time coming into reality. Twenty years elapsed between April 13, 1939, when it was included in a federal appropriation bill, and February 1959 when construction began on the dam itself. "Early passage is forecast," read a news report on the appropriation bill in 1939. Then the curtain dropped on Canyon Dam, for all practical purposes. During the next 8 years there were studies, surveys, discussions, and dis-

agreements. Suggested site of the dam moved upstream from Waco Springs (about five miles above New Braunfels) to Hidden Valley (about 10 miles farther). The springs site was unpopular locally because it would have submerged the scenic Guadalupe River Drive between New Braunfels and Sattler. And then Canyon Dam and Reservoir was authorized for construction under the River

and Harbor Act approved March 2, 1945. Again, the project bogged down until 1954 when it was re-authorized. But things began to look up in 1955. Texas' Lyndon Johnson was US Senate majority leader. Speaker of the House Sam Rayburn was a Texan and so was Homer Thornberry of the House Ways and Means Committee. that then President Dwight Eisenhower was a native of Tex-

This Is Dam Earth Built

Canyon Dam was built by scooping up the earth from the valley now covered by Canyon Lake and packing the soil into a barricade between two ridges of hills. Sounds simple, but it required a great deal of scientific evaluation to pick just the right dirt for the job. The earth had to have the proper consistency and moisture content. Samples were constantly tested. One method was baking the soil in regular household bread pans in ovens at the US Corps of Engineers building. Rolled earth fill is the term for Canyon Dam construction. Giant trucks collected the soil from the basin and deposited it along a strip 4,410 feet long where giant rollers passed back

and forth, packing it down. Huge as the machinery was, the activity acquired the dimensions of a busy insect colony from the North Overlook on a bluff 260 feet higher than the river bed. Before the embankment began to rise, construction was begun in February 1959 on the outlet works through which water was to be released from the lake into the river to flow on to the Gulf of Mexico. A trench was built, about 40 feet deep, to hold a concrete pipe 10 feet in diameter. This pipe carries the water out from the bottom of the lake into the stilling basin. The concrete was carried down into the trench in 2½-yard buckets swung by a giant crane. Above the pipe was

built a 225-foot concrete tower which houses controls for the gates covering the opening of the outlet pipe. Each of the two gates is 5 feet, 8 inches by 10 feet. (See photos Page 12). When the embankment was completed, it contained about 12 million cubic yards of lime-rich earth packed into a 9 million cubic yard bulk. Eighteen inches of rip-rap cover the upstream face of the dam to protect it from wave action. At the north end of the dam on the lake side is the rock toe at 30 feet high to guard against earth flow. It contains about 600,000 yards of limestone blasted from the spillway site across the valley. The spillway is located in a saddle hill to the south of the dam. Here a 1,100-foot wide channel was blasted out of the top of the hill to create an additional outlet for reservoir waters. Bed of the spillway is 193 feet above the reservoir floor. Adjoining the spillway is a concrete dike.

as. Political prognosticators added for good measure the fact whatever the reasons, Congressional machinery moved swiftly after Senator Johnson announced late in April that he would ask Congress to appropriate money for construction and certainly for the \$60,000 budgeted for planning. On July 1, 1955, the Senate Appropriations Committee recommended \$400,000 (including \$60,000 for planning) to begin Canyon Dam and Reservoir. By July 15, the bill had passed House and Senate and was signed by the President. A humorous facet of the

President's signing was the casual reaction among Texas' senators and congressmen. After a blow-by-blow report by wire through all phases of Canyon Dam's ups and downs, first news of the signing reached Comal County a week later through a vague reference in a letter. Annual appropriations followed. First construction contract, for the North Access Road, was awarded June 30, 1958, and first work on the Canyon Dam Project began July 28, 1958. Over 20 years had passed since the US Army Corps of Engineers began work on its proposal.

**We wish to Congratulate
THE U.S. ARMY
CORPS OF ENGINEERS
FOR THE OUTSTANDING PROJECT
JUST COMPLETED!**

*We are proud to have handled
All the Abstracts for the
Dam and Reservoir Area.*

— o —

**WE HAVE COMPLETE INDEXES, COVERING
ALL PROPERTY IN COMAL COUNTY.**

Over 50 Years Service in Comal County!

COMAL COUNTY ABSTRACT CO.
RICHARD A. LUDWIG, Mgr.
P. O. Box 470 — New Braunfels — MA 5-4721

Canyon Dam, Reservoir \$18.9 Million Project

Canyon Dam was constructed as a flood control and water conservation project under the supervision of the United States Army Corps of Engineers. Cost of the project was approximately \$18.9 million, including reservoir lands, and was financed jointly by the federal government and the Guadalupe-Blanco River Authority.

Under terms of a contract with the government, GBRA paid \$1.4 million during construction and is to pay as much as \$6.7 million more, a total amounting to 42.9 per cent of the total costs.

The Corps of Engineers is responsible for operation and maintenance of Canyon Dam and Reservoir. In addition, the Corps has undertaken the recreation development of the shores of the reservoir.

GBRA shares the cost of operation and maintenance of the dam and reservoir, exclusive of recreation developments. The authority's share of this cost is about 34.8 per cent.

Releases of water from the conservation storage pool (from elevation 750 feet above sea level to 909) is the responsibility of GBRA. By state law,

only unappropriated flood waters can be stored in Canyon Reservoir for future use.

This means that the normal flow of the river, concurrent with downstream rights, always must be allowed to flow through the dam.

The severe drought in Texas which ended in 1957 clearly demonstrated the need for Canyon Reservoir in the Guadalupe Valley.

Cities such as Seguin and Gonzales were saved from complete failure of public water systems by water stored behind small hydroelectric dams and a trickle of water in the San Marcos River.

The US Army Corps of Engineers controls releases from the flood control pool (elevation 909 feet above sea level to 943) which serves to protect communities and property downstream.

Past flood damage alone justifies the building of Canyon Dam and opens vast areas along the Guadalupe River to intense development.

The retention of flood waters and subsequent orderly release of the water will have a beneficial effect on flood crests throughout the Guadalupe Valley.

GBRA

The governing body of the Guadalupe-Blanco River Authority is a board of directors composed of nine members nominated by the Texas Water Rights Commission, appointed by the Governor of Texas, and approved by the Texas Senate.

Frank G. Guittard of Victoria is chairman of the board which includes Edgar Engelke, vice-chairman, Seguin; Zeb H. Fitzgerald, secretary-treasurer,



RESIDENT ENGINEER — Robert B. Crockett, above, was the resident engineer in charge of major construction of Canyon Dam and Reservoir in Comal County for the US Army Corps of Engineers. He is now supervising construction of the Corps' Somerville Dam and lives at Brenham.



PROJECT ENGINEER — W. F. Humphreys, above, is the project engineer supervising operation and maintenance of the new 8,240-acre Canyon Reservoir for the US Army Corps of Engineers. He is shown at a Canyon Model Park group picnic shelter on the north side of the lake.

San Marcos; Ed. F. DeLeon, Cuero; M. L. Deviney, Martindale; Edward S. Reese, Gonzales; B. W. Bock, New Braunfels; J. E. Bauer, Refugio; and Martin Dolezal, Port Lavaca.

Robert H. Vahrenkamp is general manager of GBRA.

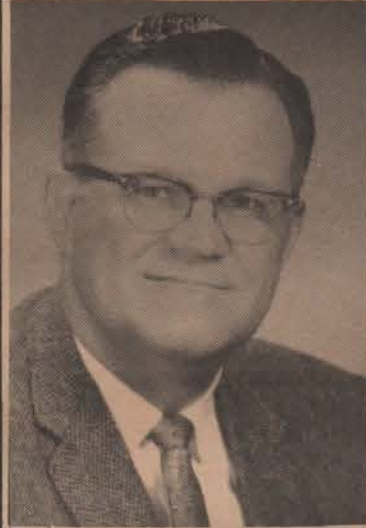
Edward M. Cape who was honored at the Canyon Dam and Reservoir Dedication April

19, was one of the far-sighted men who helped create the GBRA in 1935.

Cape served as a member of the board from 1936 to 1947, as chairman from 1938 to 1947 when he resigned to become general manager and general counsel, a post he filled until his retirement in 1960 because of illness.



Frank G. Guittard



R. H. Vahrenkamp

State's Lake Area Roads To Total \$2-3 Million

Roads built by the Texas Highway Department to accommodate the boom in traffic to and around Canyon Lake will total from \$2½ million to \$3 million.

Now under construction is the \$450,000 project on Bear Creek Road from Highway 46 to FM 2673, a distance of 7.2 miles.

Financed and with construction scheduled to begin within the next 12 months are:

1. Extension of FM 2673 (Sattler Road) from Bear Creek Road to Startzville, \$125,000, 2.8 miles.

2. Reconstruction of FM 484 from Highway 32 (at Fischer) south to the North Shore Road, \$133,000, 3.5 miles.

3. Reconstruction of FM 306

from the MKT Railroad (at Semmler's Iron Ranch) north for 7.8 miles, \$288,000.

Financing is expected to be appropriated within one or two months for an extension of North Shore Road cutting across from FM 484 to Crane's Mill Road, \$132,000, 2 miles.

Long range plans, expected to be completed in about five years:

1. Building the road along the south side of the lake from Startzville to US 281.

2. Building the road on the north side of the lake from Crane's Mill Road to US 281.

Completed are the stretch of FM 306 from the Guadalupe to the North Access, through Canyon City, and FM 2673 from FM 306 through Sattler to Bear Creek Road.

Phone CoOp Survey Sees 9,000 by 1971

A projection of Canyon Lake population increase within five years indicates growth to 9,000 with one-third of them telephone subscribers. The estimate is considered conservative by the organization making the survey.

Telephone patrons in the Canyon Lake area will jump from the present 555 to over 3,000 by 1971, according to a survey conducted by the Guadalupe Valley Telephone Co-operative. The survey, made between July 1964 and August 1964, was presented to the co-op board recently.

"We find the area is growing faster now than we anticipated during the survey," said CoOp Manager Ben Wolle. "We checked with subdividers a year ago on the number of

lots sold and houses built." An estimate was made on the basis of one-third of the lot buyers subscribing for phone service.

"Some sections may grow faster, others slower, than we projected," Wolle said.

The projection shows a total of 3,012 stations in the Canyon Lake area in five years with 864 in the Hancock exchange which is scheduled to be in service in late 1966 or early 1967; 1,087 in the Crane's Mill exchange; 698 in the Sattler exchange; and 363 Smithson Valley exchange subscribers in the lake area.

Not included in these figures are any subscribers beyond the immediate lake area which now has 555 stations in three exchanges and in 1956 had 228 telephones in two exchanges.



FOR THAT
HOME ON
THE LAKE

you can

LEAN ON US

for Savings Success

Saving here is easier . . . because it's more profitable!

Along with greater earnings, and insured safety, you enjoy convenience, too. Your money is readily available, whenever you want it. Save successfully . . . save here!

You can **LEAN ON US** for
Mortgage Loans Too!

First Federal Savings & Loan Association

199 MAIN PLAZA

NEW BRAUNFELS, TEXAS

PHONE MA 5-3431

First Real Rainbow Fishing In Texas Below Canyon Dam

The Guadalupe River below Canyon Dam has been stocked with 10,000 rainbow trout transplanted from Missouri by Lone Star Brewing Co. Operation X-Bow has provided the first full-scale public rainbow trout fishing in the Lone Star State.

Tw 4,000 drops were made April 6 and 11 at several sites in a 10-mile stretch downstream from the dam. An additional 2,000 were released

into white water April 14.

Anglers have been catching the trout since the first few minutes after the initial release.

The rainbows ranged from 8 to 14 ounces, from 12 to 14 inches in length when released.

Fish positions are marked with laminated signs. Two per cent of the rainbows were tagged on the gills by Texas Parks

and Wildlife biologists who cooperated in the stocking.

Anyone who catches a tagged fish is asked to fill out the short form available at all commercial establishments in Canyon City and mail it as addressed on the attached envelope. The information will help determine future trout stocking.

Operation X-Bow began five years ago when Lone Star Brewery became interested in providing rainbow trout fishing in Texas, according to Harry Jersig, president and chairman of the board.

Studies encouraged the hope that trout will survive in the Guadalupe River waters.

Rainbows need cold water to survive. Water released from the depths of Canyon Lake tests cold enough to permit trout survival in the Guadalupe River as far as ten miles below the dam.

The fish also need a high percentage of oxygen in the water. Speed of the Guadalupe flow as it descends over rock formations below the dam causes to dissolve almost twice as much oxygen as the finny newcomers need.

Temperatures in the 10 river miles between the dam and Sattler range from 49 to 74 degrees, well within trout tolerance.



TROUT TAGGING — Richard L. White, project leader of the trout drop for the Texas Parks and Wildlife Department, grasps one of 200 rainbow trout measured, weighed, and tagged before release into the Guadalupe River below Canyon Dam. Lone Star Brewing Co. provided 10,000 trout for the stocking.

Natural Bridge Caverns Largest Known in Texas

Texas' largest known cave, Natural Bridge Caverns, is nationally known for its variety of superior cave features.

Spectacular formations are 90 per cent live — active and still growing — with delicate, glistening color. Rare "fried eggs" are found here in abundance.

Pools are filled with clear, sweet water, emerald green. Fresh air circulates naturally, and the temperature is a constant 70 degrees.

One of the huge chambers is the "Hall of the Mountain Kings," 350 by 100 feet with a 100-foot-high ceiling.

Artfully developed to retain all of its natural beauty, the caverns are lighted with 35,000 watts of indirect lighting, miles of wiring totally concealed.

One-half mile of paved trails are designed to be walked with ease.

Natural Bridge, for which the caverns are named, is a 60-foot limestone span above the canyon entrance to this subterranean world.

The site is ranchland midway between New Braunfels and San Antonio, off FM Road 1863, in the beginning of Tex-

as' Hill Country.

The caverns' vast chambers were discovered in 1960 by four cave explorers. They were Orion Knox Jr., Preston Knodell, Al Brandt, and Joe Cantu, all members of St. Mary's University Spelunkers Society.

Development began in 1962, and Natural Bridge Caverns were opened to the public on July 3, 1964.

Guided tours are conducted every 30 minutes between 9 a.m. and 5 p.m. seven days a week the year around, with the exception of Christmas Day.

To reach Natural Bridge Caverns from IH 35 at New Braunfels, drive out Highway 46 West to FM 1863 and follow the signs. From San Antonio, drive north on Highway 281 to FM Road 1863 and follow the red-tipped arrows.

Ladies are advised to wear flat heels. Since the temperature is a moderate 70 degrees within the cave, sweaters and jackets are not needed.

The Guadalupe River watershed has a total drainage area of 6,032 square miles of which 1,425 square miles are above the Canyon Dam site.



Primed
for great eating and entertainment!

Specializing in FINE STEAKS

ALSO
REGULAR PLATE LUNCH
Homemade Bread, Pies, & Cakes

SMILEW'S KUNTRY KITCHEN
Hiway 306 At Sattler Road

THIS WAY MATES

Looking for a convenient place to store your boat?

We have 30 stalls to serve you.

Only **\$10** per month

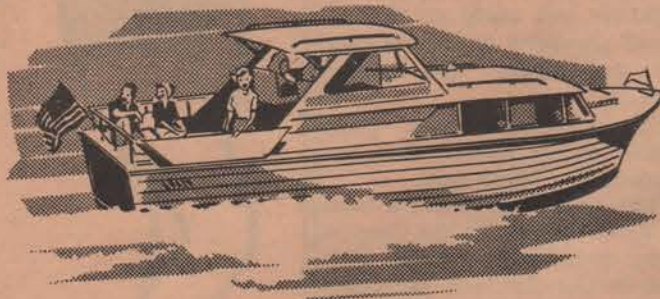
- ALSO -

BOAT RENTALS - SUPPLIES

BOAT & MOTOR REPAIRS

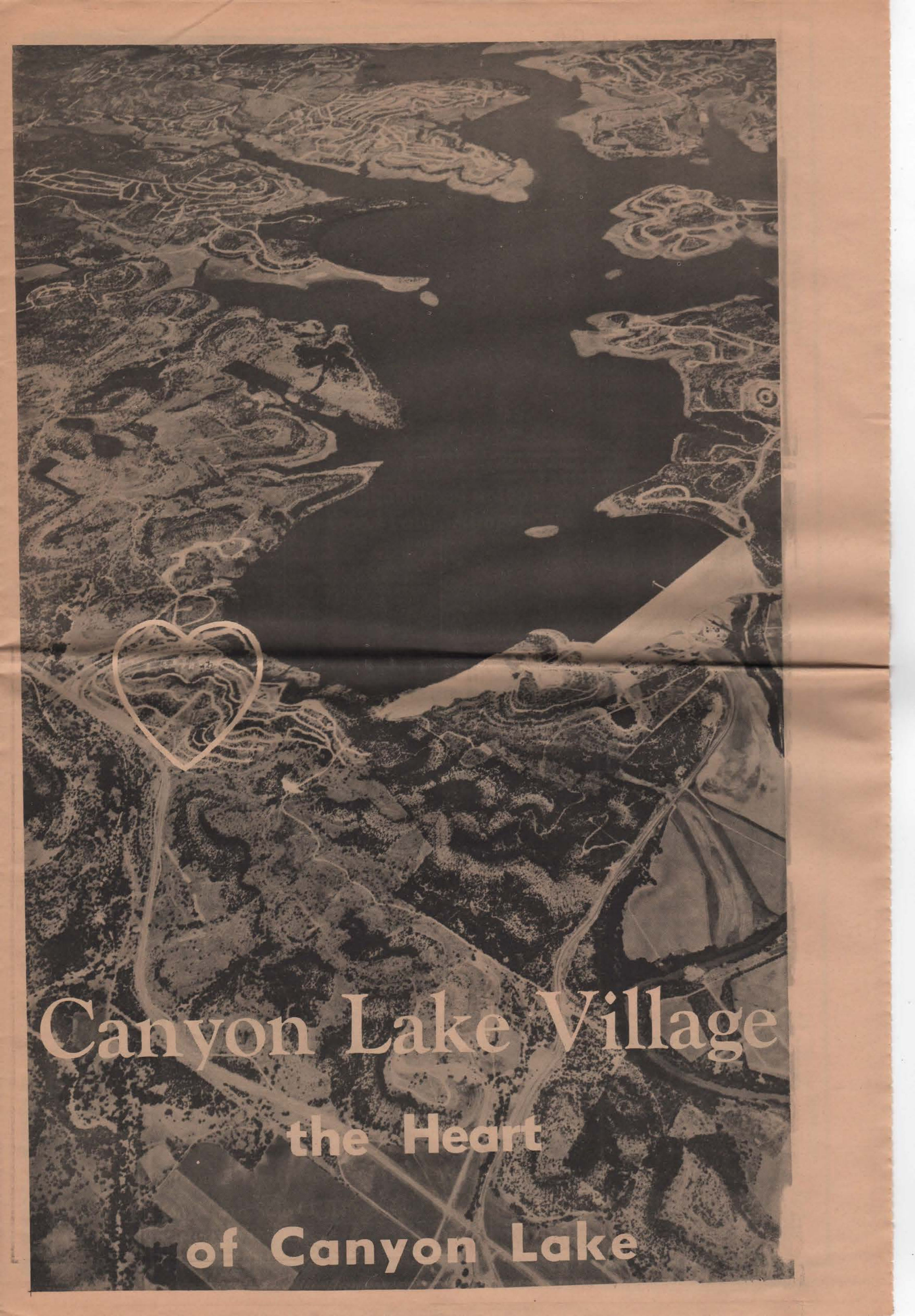
FISHING SUPPLIES

Authorized Dealer For RIVERS BOATS



Reed's Boat Storage & Marine Supplies

Old Cranes Mill Rd. at Mobile Homes Addition



Canyon Lake Village

the Heart

of Canyon Lake

Largest Peninsula on Reservoir Location of Canyon Lake Hills

Canyon Lake Hills is on a two-pronged peninsula, largest on Canyon Lake, jutting out from the south shore.

Miles of water frontage are available to residents of Canyon Lake Hills, and bluffs 200 feet higher than the lake bed command a magnificent view of the lake in all directions.

On wooded high ground is the park with barbecue pits for picnicking, Texas-size swimming pool, dressing rooms, and rest rooms.

Canyon Lake Hills has its own boat launching ramp. All of its roads are black topped and dedicated to the county.

Lots in the 1,500-acre subdivision vary in size from one-fourth to three-fourths of an acre. The development has electricity, central water system, and telephone service.

Located in the heart of excellent hunting and fishing country, Canyon Lake Hills provides year 'round recreation.

To reach Canyon Lake Hills from Houston, Corpus Christi, and Austin, follow the best route to New Braunfels, then west on Highway 46 to Crane's M-11 Road (about seven miles) and follow the signs.

From San Antonio, go north on Highway 281 (San Pedro) to Highway 46. Turn right and follow the signs to Canyon Lake Hills.

The overall length of Canyon Dam is 4,410 feet, and its maximum height is 224 feet above the stream bed.



MISS LOVERWURST — Miss "Loverwurst" Vicki Roth, representative of New Braunfels' famous sausage celebration, Wurst Week, dabbles a toe in the huge "L" shaped swimming pool on a hill top at Canyon Lake Hills. The pool is for the use of residents in the development which covers hundreds of acres on the two-pronged peninsula jutting out from the south shore of Canyon Lake.



TROUT FISHING AT HORSESHOE FALLS — Lonnie F. Holden of Houston casts his line into the white water at Horseshoe Falls Estates to add to his string of rainbow trout. The site, a favorite of Comanche Indians into the early 1800's, is on the 800-acre Horseshoe Falls Ranch bought by Dr. S. D. David and S. D. David Jr. in 1952 as a Hill Country retreat. About 130 acres have been subdivided. Giant cypress trees and huge oaks enhance the riverfront lots. A park for residents stretches along the Guadalupe 2½ river miles below Canyon Dam. S. D. David Jr., who operates Horseshoe Falls, is president of the Comal County Chamber of Commerce.

High Country Tracts on Guadalupe

High Country is the development of Mildred and Henry Semler. He is the well-known owner of the Iron Ranch. Their subdivision is five miles below Canyon Dam and two miles downstream from Sattler, where the scenic River Drive winds along the cypress-wooded mountainsides where there are fishing, boating, and bathing; paved roads, water, electricity, and telephones.

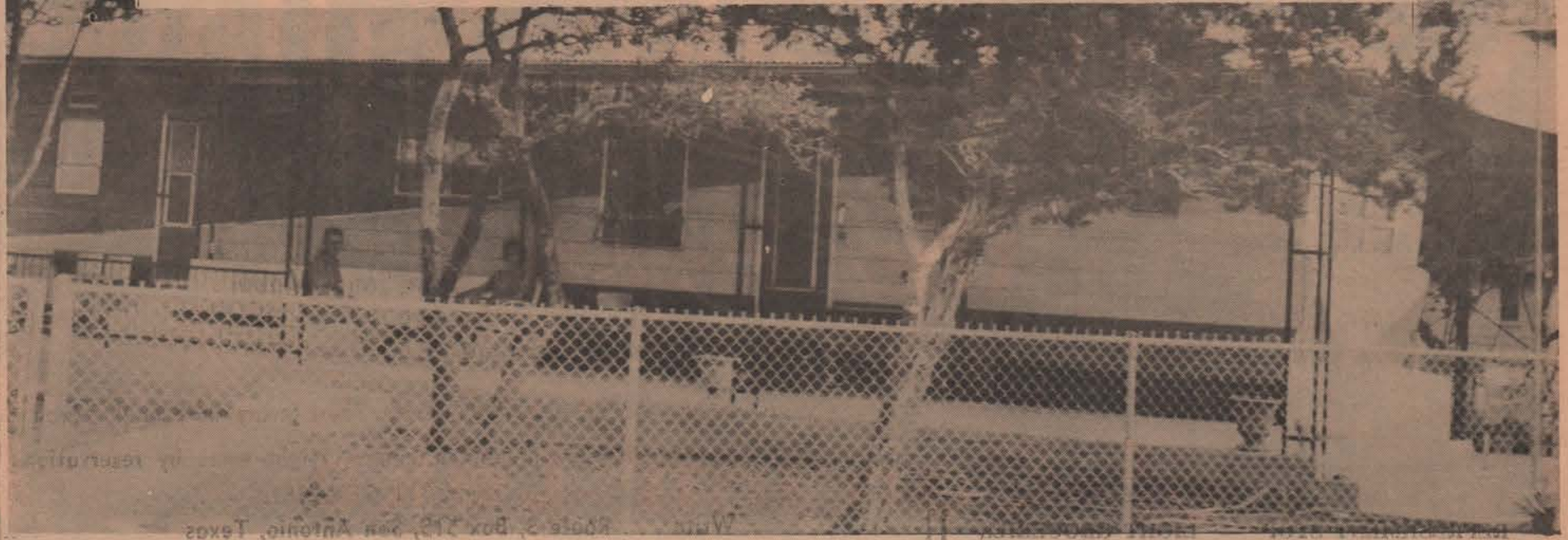
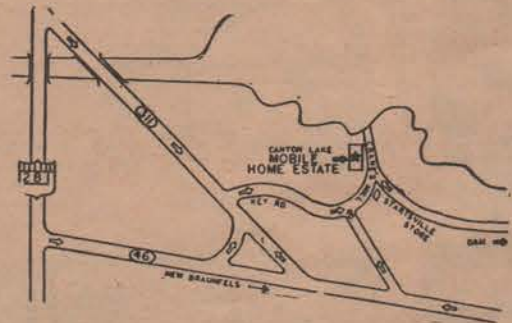
Canyon Lake Mobile Home Estates

On SAN ANTONIO SIDE OF LAKE

The sub-division where you can put a mobile home or build a house. Lots 75 feet wide. Water system with fire plugs . . . Electricity and telephone available . . . Wide paved streets, shade trees. Swimming pool, park area and boat launching facilities available . . .

For information call . . . CLARK F. STEVENS, 497-2146.

As low as \$25 down . . . \$15 Monthly



Techniques of Early Craftsmen Special Interest of Contractor

Lawrence Meckel, a skilled and busy modern builder in Comal County, has a second and equal talent, restoration of historical dwellings.

Sometimes he blends modern with historical as in a contemporary residence built on a hill near Canyon Dam. The house is constructed of boards and beams from century-old ranch buildings, which stood on the site of the present dam in Guadalupe Valley.

Mellowed and weathered woods, combined with touches of native limestone, created a modern home with distinctive charm and beauty which reflect the antiquity of the materials.

A huge beam from the barn was cut and polished to a fine sheen to become a pass-through counter. The heavy boards of a butchering house cutting board became a coffee table.

Aged cypress was used in panelling. Knotty, handhewn cedar served as porch posts.

The home is built with the materials provided by the land about it, just as the early German pioneers utilized what nature provided in the Texas Hill Country.

Another century-old building was transported by Meckel from the lake basin to a hill above and reconstructed. With the addition of two rooms, it serves as a guest house.

Old cypress standing in what is now Canyon Lake were cut for the additional construction. Pecky cypress was made into cabinets for the added kitchen. Old two-by-fours were reworked into a one-and-one-half-inch counter. Beams of an old barn run across the ceiling. Old lumber made the random flooring.

The original section, a log

house, was reassembled just as it had been built by its first owner.

A artist in building crafts as well as a contractor, Meckel is a purist when reproducing early structures.

For almost 20 years, he has been an avid student of the forgotten building methods which have made the early

German settlers' homes endure for over a century.

The number of Old World master craftsmen who settled in Comal County in the mid-19th Century was unequalled in the Texas frontier.

Their knowledge was handed down from one generation to the next, but the number who remembered or cared to know diminished.

Meckel queried the elder masons and carpenters and has collected their antique woodworking, carpentry, and locksmith tools.

To reproduce the mortar for

the rescued cabin, Meckel and his father, Frank, a mason, obtained caliche from a site used by early homebuilders. The mortar was a mixture of the lime-rich caliche, refined lime, and oat straw.

Although difficult to mix because of its sticky consistency, the mortar hardened well and would not crumble. The same mixture was used to plaster walls of the restored cabin.

Respect for the old skills demonstrated by owners of these homes has preserved for the future examples of vanished folk arts.

Natural Bridge Caverns



The 50-foot Watchtower rises in the Castle of the White Giants. Since formations in Natural Bridge Caverns are "live," still growing, their surfaces glisten and they are multi-colored.

- ★ Ever Changing Scene
- ★ Unique Formations
- ★ Always 70 Degrees
- ★ Paved Trails
- ★ Clear Pools
- ★ Travertine Dams

South of Canyon Lake and 15 miles west of New Braunfels, off FM 1863. Reach from San Antonio via 281 (San Pedro Ave.); from New Braunfels, west on 46.

Open year 'round (except Christmas Day). Tours every half hour, seven days a week. Special rates for organized groups. Night tours by reservation.

Call . . . Bulverde 512 GE 8-2181.

Write . . . Route 3, Box 515, San Antonio, Texas

Antiques

DILLEN'S

Interior decorating, European imports. Spanish prie dieu. English book press. 295 E. San Antonio St., New Braunfels. MA 5-2810.

GRANDMA'S HOUSE

Largest stock of antique lamps, china, bric-a-brac in the Southwest. 1492 Highway 81 W., corner of Hackberry, New Braunfels. MA 5-4693.

MAJORS ANTIQUE & GIFT SHOP

(The Village Peddler) Antiques Custommade decorative accessories. Antiqued flower arrangements. Tole painting. Primitives. 336 Landa St., New Braunfels.

MOORE'S ANTIQUES

Specializing in American pressed glass. Old German kitchenware. Open weekends. 619 Comal Ave., New Braunfels. MA 5-5830.

POLLY'S ANTIQUES

Character bottles. Pressed glass. China, frames, old furniture. Pneumatic clock. On Bulverde Road 1½ miles off Highway 46 toward Caverns. New Braunfels.

GEORGE SILVER SALVAGE CO.

Antiques. Museum of early German primitives. Ironware, stoneware, copper, etc. 546 S. Seguin Ave., New Braunfels. MA 5-4526.

SO-OLD SHOP

Fish and game sets. Chinese rugs. Steins, cut glass. Furniture. 984 W. San Antonio St., New Braunfels. MA 5-6510.

THIS OLE HOUSE

Lalique. Cameo. Sandwich. Copy El Greco. Rosewood chairs. Ginori. Chinese. Steuben. 447 S. Seguin St.

THE TRADING POST

Cut glass. China, plates, bric-a-brac. Colored glass. Carnival glass. 185 E. Jahn St., New Braunfels. MA 5-2246.

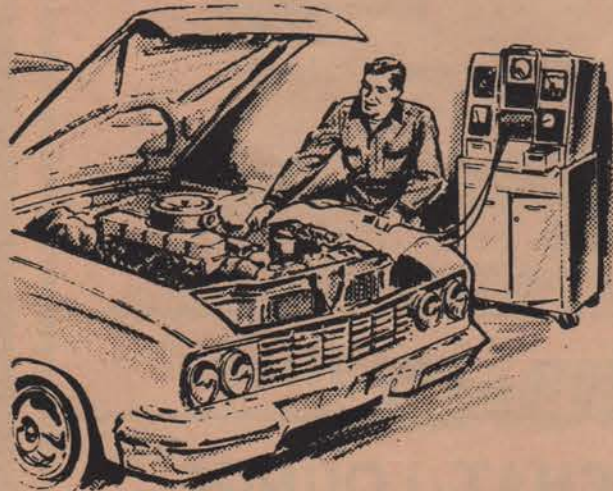
THE YESTERDAY SHOP

Specializing in early German settler antiques. 393 Tolle (one block south of E. San Antonio St.) MA 5-2854.

(Paid Adv.)

Canyon Dam is 56 miles from Austin.

CANYON CITY SERVICE



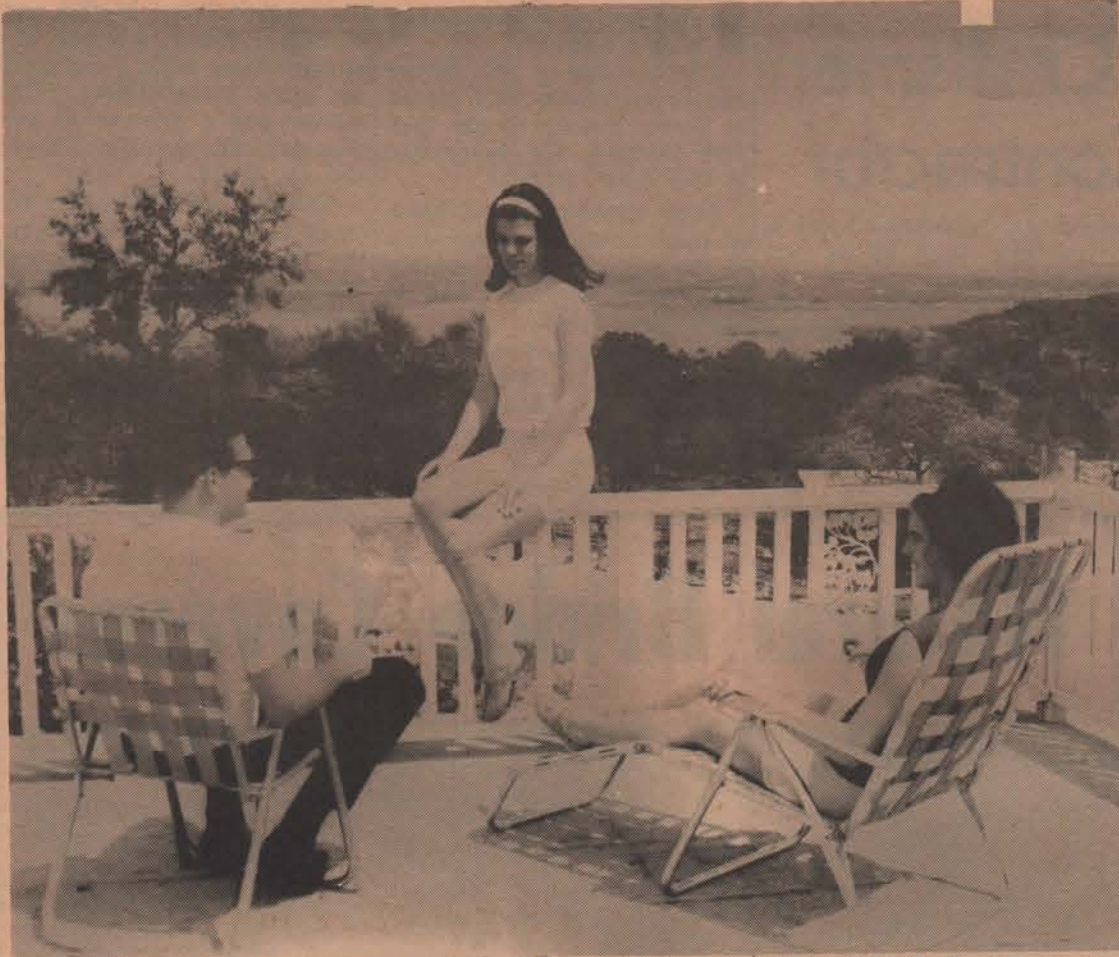
**AUTO REPAIRS & PARTS
TIRE REPAIRS & SERVICE**

7 A.M. TILL 9 P.M.

Also

FISH BAIT — PICNIC SUPPLIES

REFRESHMENT STOP — LIGHT GROCERIES



VIEW OF LAKE — Visitors at the Canyon Springs Resort home of Mr. and Mrs. Clyde V. Cochran of San Antonio

enjoy the sun deck which looks out over Canyon Lake and the wooded hills.



HILL COUNTRY LIVING — Maxine and Clark Stevens, owners of Canyon Lake Mobile Home Estates, enjoy the aroma from their barbecue pit at sunset.

High Hills Setting of Canyon Lake Mobile Home Estates

High in the hills on Crane's Mill Road is Canyon Lake Mobile Home Estates where permanent and weekend residents enjoy the convenience of trailer living, each on a 75 by 100-foot lot.

Mr. and Mrs. Clark Stevens, owners, have moved there from San Antonio where they owned a trailer park. He has nine years' experience in mobile homes.

The two-year-old development has a central water system, electricity, and telephone service. Available to res-

Canyon Dam consists of an earth embankment with a concrete outlet structure located near the middle. Selected soils used in its construction were carefully placed and compacted. Eighteen inches of rip-rap surfaces the upstream face to protect it from wave action.

idents are a swimming pool boat launch, and picnic grounds.

Ten families are permanent residents of Mobile Home Estates, and 25 have trailers in the development.

Canyon City Service Makes Auto Repairs

A motorist in distress in the Canyon Lake area will find auto servicing, repair, and parts at Canyon City Service, owned by Mr. and Mrs. Freeman Jennings.

A drive-in grocery is operated in connection with the station on FM Road 306. The Jenningses carry bait and supplies for fishermen, and there are tables and benches inside where you may pause for refreshment.

Hours are 7 a.m. to 9 p.m. seven days a week.

Canyon Springs Resort Has Country Club Life

Country club living on scenic Canyon Lake is a distinction of Canyon Springs Resort. An attractive club house and swimming pool are set among trees on a hill with a beautiful view.

And there are stocked fishing coves, a tennis court, softball diamond, recreation center, and shaded picnic areas.

Canyon Springs Resort is planned for suburban life as well as for vacation residences which will become retirement homes.

Wooded lots with level building sites provide a stirring panorama of Canyon Lake and the green Hill Country. Safety-

engineered streets eliminate hazardous driving.

Surface water drainage systems are fully provided. Canyon Springs Resort has its own approved water system. There is electrical and telephone service.

To reach Canyon Springs Resort from San Antonio, drive north on US Highway 281 (San Pedro Ave.) to State Highway 46 and turn right. At approxi-

One trot line or 10 throw lines per fisherman is the Comal County limit with no more than 40 hooks to a trot-line or two hooks to a throw line.

mately five miles, turn left to Smithson alley, turn right on the Key Road to Crane's Mill Road, turn left to Startzville; turn left and drive two miles to Canyon Springs Resort.

From New Braunfels, take Highway 46 west to Crane's Mill Road and follow it about six and one half miles to Startzville.

It is unlawful to sell any perch, catfish, or minnows taken in Comal County.

Original Ceramics & Souvenirs

Gifts for all occasions
Cards, Gift Wrappings, etc.



CANYON DAM GIFT SHOPPE

EULALIE GRACE

Hiway 306 at Canyon City

Lazy Day Grocery

&

Chit Chat Lounge

Complete Grocery Store

Fresh Vegetables
Canned Foods
Frozen Foods
Fruits
Fresh Meats

Fishing Supplies

CHIT CHAT LOUNGE

"Where Friends Will Meet"

YOUR HOSTS

Mr. and Mrs. Orville Heitkamp

ON CANYON LAKE

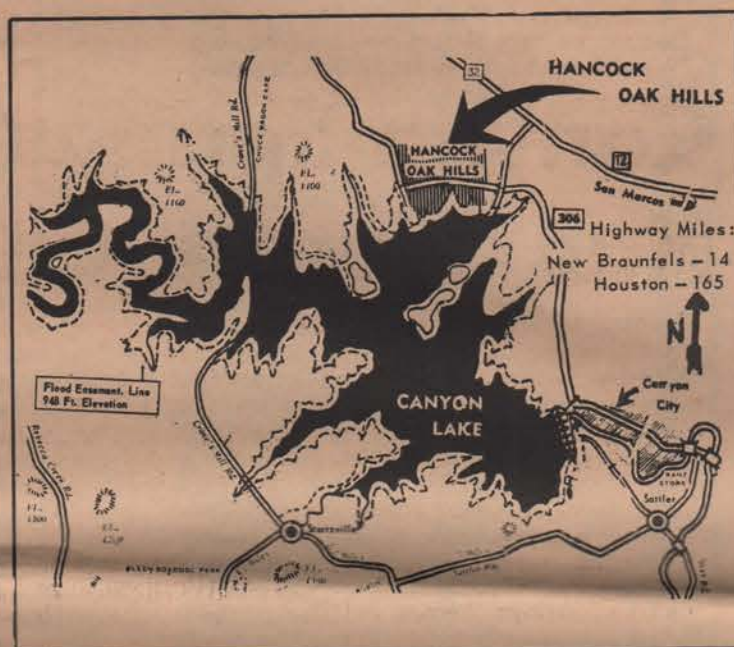
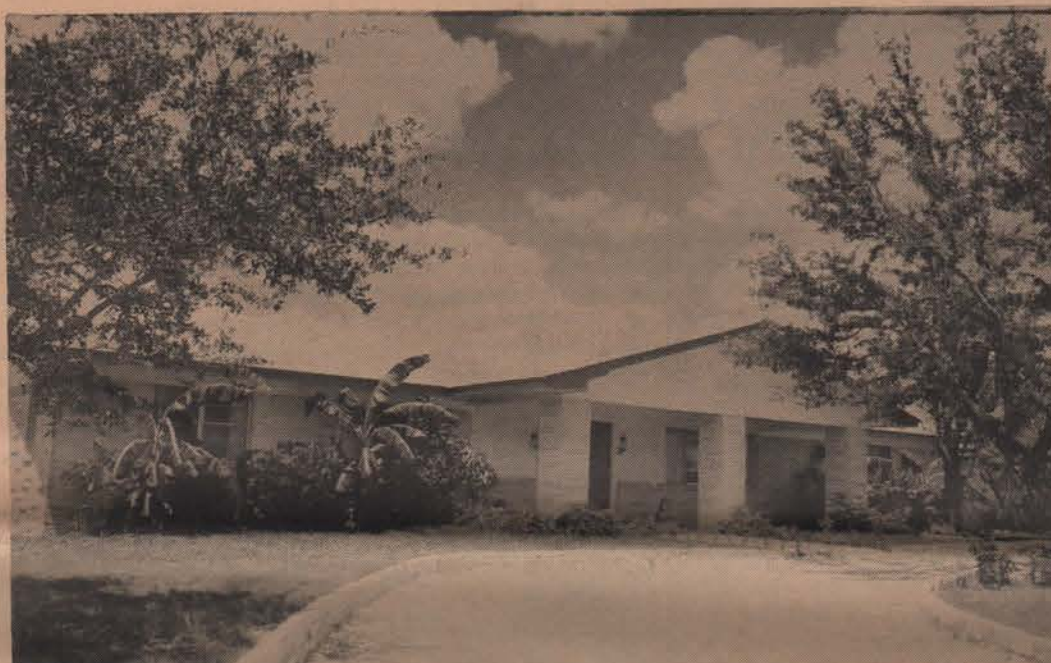
~~~~~

HANCOCK OAK HILLS

REST

RELAXATION

RECREATION



★On the cool north side

★Aircooled by prevailing Southeasterly breeze

★Property owners will have use of swimming pool, park area, boat launching facilities, rest rooms, central water system, electricity, telephones, playground and barbecue pits.

★Sensibly restricted for your protection

★Easy terms and LOW down payments

★Beautiful tree covered lots and acreage

★Zoned to suit your requirements

★Paved roads

★On State Highway 306

★Acreage and large lots (80' X 250')

1/2 ACRE from \$395⁰⁰

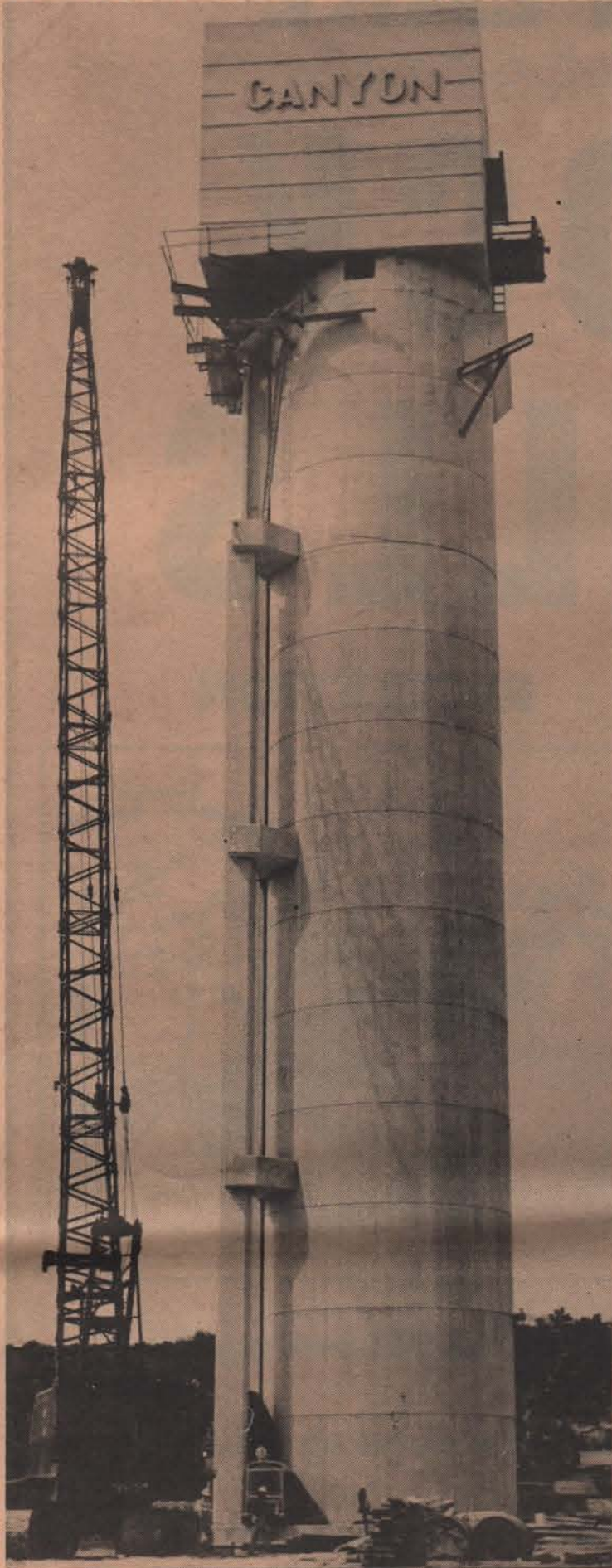
1 ACRE from \$595⁰⁰

Take Highway 306, 14 miles from New Braunfels or Highway 12, 17 miles from San Marcos, follow signs to field office. Phone Sattler, WO 4-3311. For information write to Tom McClure, Star Route 2, New Braunfels.



Hancock Oak Hills office on FM 306

Outlet Works of Canyon Dam



TOWER AT DAM — The 225-foot tower of Canyon Dam's outlet works, above, is shown at the time of completion, before water was confined behind the dam. Water released from the dam by controls in the tower passes out from the base through two gates, 5 feet 8 inches by 10 feet, bottom photo, in the conduit pipe under the embankment. (Roger Nuhn Photos)



PRIVATE ISLAND — The view above is looking south across the lake from a 125-acre private island owned by

Mr. and Mrs. Tom McClure. Their Hancock Oak Hills development lies east of the island.

Hancock Oak Hills Always Cooled by Southeast Breezes

Hancock Oak Hills, one of the nicest subdivisions on the north side of Canyon Lake, is naturally cooled by the southeasterly prevailing breeze which blows over the wide expanse of the reservoir.

Readily accessible from all points on paved road, Hancock Oak Hills is on FM Road 306.

Natural terraces permit unobstructed views from all levels.

This subdivision is owned and operated jointly by Tom McClure and his wife Rosalie and Hanno Guenther.

Hancock Oak Hills covers 400 wooded acres and has a nine-mile shoreline.

Hancock was a community centered by the old Hancock Store, an early landmark the site of which is now erased by the waters of Canyon Lake.

The store housed one of the earliest post offices which originally was on the Guadalupe River. Running the establishment for many years was H. F. Guenther, or "Uncle Frank" as he was affectionately known to his many friends.

Legal minimums on fish caught in Comal County are bass, 11 inches; crappie, 8 inches; and catfish, 12 inches.

John Hancock, for whom the community was named, was an early land agent who bought and sold many thousands of acres in Comal County and throughout Texas.

The McClures came to Comal County 26 years ago. He is a Californian turned Texan and a graduate of Stanford University. She is from San Antonio.

On their 500-acre working ranch two miles up the road toward Fischer, they raise Brahma cattle, angora goats, and sheep.

Guenther, owner of Guenther Implement Co. near New Braunfels, is descended from the German pioneers who settled Comal County in the mid-19th Century.



AT JACOB'S CREEK PARK — A teenage trio enjoys picnicking at one of 700 picnic tables erected by the federal government in parks on Canyon Lake. The site is Jacob's Creek Park. Jacob de Cordova, famed Texas land agent of the mid-19th Century, gave his name to the creek during explorations of the virgin Hill Country lands.

Lazy Day Grocery Opens, Largest in Canyon Lake Area

Lazy Days Grocery, largest in the Canyon Lake area, and the adjoining Chit Chat Lounge have opened at FM 306 and the North Access Road.

Orville and Patsy Heitkamp have returned to Comal County after nine years to manage the enterprise which he owns in partnership with his brother Harvey and Franklin Schaefer. Patsy is the daughter of County Commissioner and Mrs. H. C. Stratemann.

A complete grocery, the Lazy Days covers about two-thirds of the new 4,480-square-foot building. It stocks fresh meats, vegetables, and fruits, and a complete line of frozen foods. Fishing equipment and some dry goods are also carried.

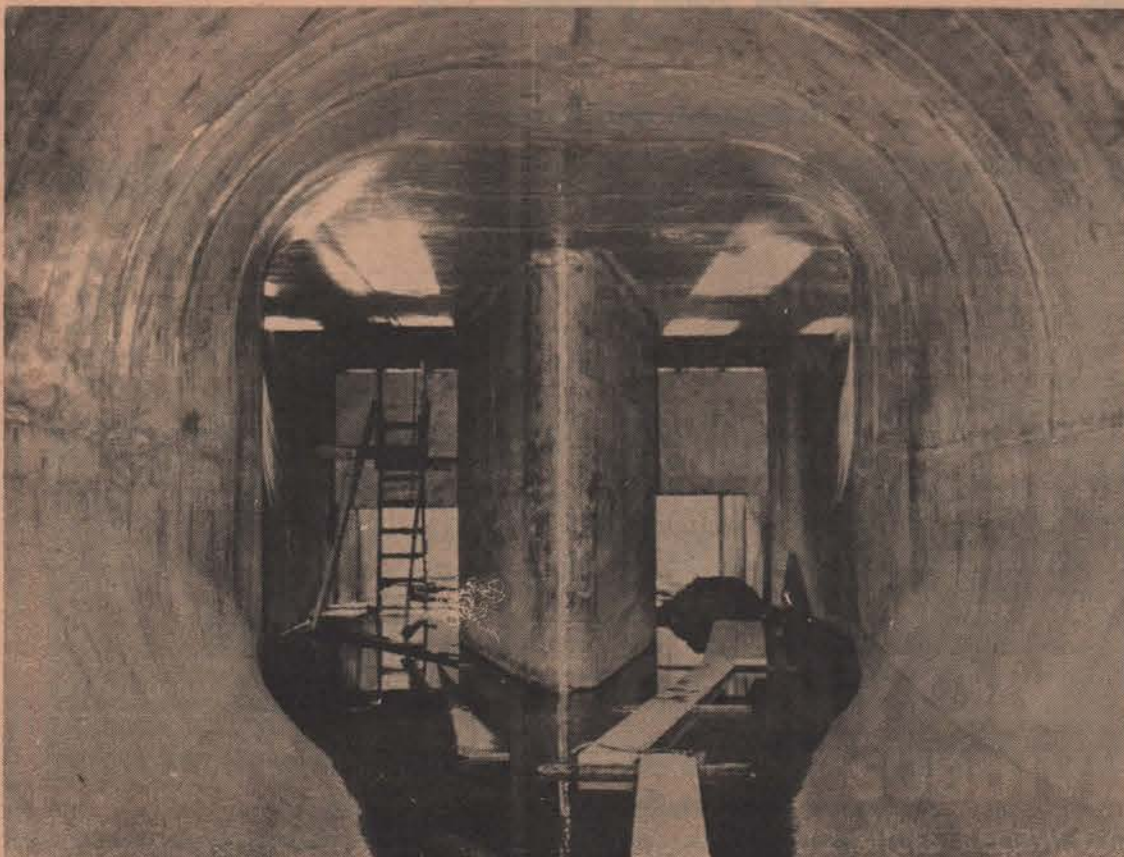
The attractive walnut-paneled Chit Chat Lounge has a wood-burning stone fireplace.

"Lazy Days" applies to Canyon Lake visitors, not the Heitkamps.

"That's what the customers have," said Orville who foresees few idle moments. He was a construction superintendent for American Bridge Co. for whom he worked 10 years.

The Heitkamps also have built a new home near their business. They have four children, Sherry, 12, Glenn, 11, Dunreeth, 9, and Donald, 4.

The US Corps of Engineers estimates the Canyon Dam recreation area will attract 2,000,000 visitors annually.



Government to Charge Fees in Parks Eventually

Fees eventually will be charged for public admission to federally administered recreation areas around Canyon Lake when the water level is higher and recreational facilities are more nearly complete, according to the US Army Corps of Engineers.

Federal recreation areas on Canyon Lake include Canyon Park, Potter's Creek Park, Jacob's Creek Park, Crane's Mill Park, Comal Park, North Park, and Overlook Park.

In any federally built recreation area leased by state or city, charging of fees will be up to those governing bodies.

Within this category would be Comal Park, which New Braunfels proposed to lease, and a portion of Jacob's Creek Park applied for by Comal County.

Kermit & Lucille's Has Famed Local German Sausage

Old-fashioned German sausage made in Comal County is available at Kermit and Lucille's Cafe on FM 306 near FM 484.

The cafe, owned by the Kermit Schlameuses, serves short orders and stocks picnic and fishing supplies.

Kermit retired from the Air Force in 1961. Before he entered the service he taught at four country schools in Comal County.

Kermit and Lucille's Cafe is six miles above Canyon Dam on the north side of the lake.

Fees will be paid for cars or for individuals.

Three types of car permits will be issued. An annual permit for all federal recreation areas in the nation costs \$7 and covers all occupants of a car. A \$3 permit covers all occupants of a car for 30 days, and a \$1 permit is good for one day.

Permits for individuals include a \$1.50 card for 30 days at a specified project and a 50-cent single day permit good for any federal area.

NO PERMITS

According to the Ft. Worth District Office, US Army Corps of Engineers, permits are not required for the following:

Fishing from the bank of a lake, river, or creek if your car is not parked in a fee area.

Participation in a boat regatta or swimming competition.

Watching a public water skiing exhibition or regatta.

Driving around to enjoy the scenery but not using facilities.

Using a friend's boat which is already berthed on the lake.

Dining at a restaurant or walking along the lakeshore or through the woods.

When using facilities of a concession.

Water stored in Canyon Lake's conservation pool is under complete control of the State of Texas and is dispensed by the Guadalupe-Blanco River Authority for municipal, industrial, and private use.



BOAT RAMP — Among recreation facilities built by the federal government on the shores of Canyon Lake are several boat ramps like the one above, wide enough to accommodate two launchings simultaneously.

Special permits for Sunday school groups and for weekend campouts by Boy or Girl Scout groups may be obtained from the project engineer.

Fees will be charged generally between Memorial Day and Labor Day. However, the period may be extended if use of facilities warrants it.

The fees for use of federally operated recreation areas are authorized under the Land and Conservation Act passed in 1965.

At flood control capacity, the level of Canyon Lake would be 193 feet above the old Guadalupe River stream bed.

"For Gracious Living"

Choose from our Large Array of . . .

LIQUORS
WINES
LIQUEURS
BEER

**Canyon City
Liquor Store**

Hiway 306 at Canyon City



Enjoy the Outdoors in a Beautiful Setting!

LARGE WATERFRONT LOTS (75' x 250')

- ★ FISHING . . . Rainbow Trout, Bass, and Catfish
- ★ PICNICKING . . . Water Front Park and Picnic Tables
- ★ BOATING . . . Boat Ramp in Park
- ★ UTILITIES . . . Electricity, Water, Telephones

All in Beautiful

**CANYON CORNER
SUBDIVISION**

2 MILES BELOW CANYON DAM

Star Route 2, New Braunfels, Texas

MAX PAPE - Developer

WO 4-3880



La Villa \$1.5 Million Resort Scheduled on North Shore Road

La Villa is a luxury resort estimated to cost about \$1.5 million and planned for a tract at the corner of North Shore Road and the cut-off to Devil's Backbone.

North Shore Road is the federally-built link from FM 306, which ends at the North Access Road, to FM 484, which leads to Fischer Store.

The site is at a point where a finger of Canyon Lake will reach the highway at a bridge.

All financing for the project has been provided, according to Frank Bashara of Houston, manager. Construction is scheduled to begin in mid-June, and completion of the full project is expected with-

in nine months, he said.

Behind the creation of La Villa are six Texans, most of them in Houston.

Drawing its theme from Old Spain, La Villa will have accommodations in a number of casitas (little houses) in addition to a lodge with 100 rooms and three levels, and a 40-unit motel, the latter operated on a lease basis.

A split-level restaurant will overlook one level of a man-made lagoon which is to drop over falls at two points. Also facing on the lagoon will be the motel and two buildings of shops.

All architecture and decor will be Spanish with much use

of wrought iron, exposed beams, and curved arches. Each casita will have its own private patio. These vacation houses may be purchased as condominiums or rented.

Casitas may be purchased furnished or unfurnished. La Villa maid service will be available to those who own the "little houses."

In the main lodge will be suites and double and single rooms.

Olympic-size swimming pool and tennis court and a putting green will adjoin the lodge which will house a private club and have a health club on the third level. There will also be a swimming pool at the motel.

The private club will be open to all lodge guests, occupants of casitas, motel guests, and those who hold leases to the commercial buildings.

A cantina and a flea market are among establishments scheduled for the commercial buildings on North Shore Road.

Housing for employees of La Villa will be provided on the grounds.

Jeeps will be available for guests to use when hunting or just for exploring the Hill Country.

At capacity, the Canyon Lake will have a 60-mile shoreline and a conservation pool of 366,400 acre feet. In addition, the reservoir provides for a flood control pool of 354,700 acre-feet. One acre-foot equals 326,000 gallons of water.

The stream bed of the Guadalupe River at Canyon Dam is 750 feet above sea level. Hills in the area rise to 1,770 feet above sea level.



TOM CREEK STABLES — Ready to follow the scenic trail on Tom Creek Development are Beverly Haley, left, and Roberta Schwarz. Facilities for renting and storing boats also are available at Tom Creek.



RIDING IN — Coming in for a landing at Jacob's Creek Park are Bobbie Specht, left, and Jacque Buske. The park covers a peninsula on the north shore of Canyon Lake. Public boat ramps are spaced all around the reservoir which will have a 60-mile shoreline at conservation pool capacity.

LAKEVIEW DRIVE-IN

Hiway 306 & Canyon Park Entrance

PICNIC SUPPLIES

FISH BAIT - LIGHT TACKLE

SHORT ORDER MENUS

ICE

and

BOATS FOR RENT

Sinclair Service Station

**New Braunfels
Smokehouse**
A GOOD PLACE TO EAT

SERVING
7 A. M. to 8 P. M.

Old-Time Hickory-Smoked Meats

Come for a Breakfast
of Wild Rice Pancakes

Meat plates, hearty sandwiches,
substantial soups, homemade bread
Apple Dumplings

Take home our delicious smoked meats,
gourmet foods, famous jellies, unusual gifts

Enjoy our Country Atmosphere
swimming pool and snack bar

New Braunfels

JUST NORTH OF TOWN ON HIGHWAY 81 — OFF IH 35

Congratulations

To all who participated and especially those who made this a reality.

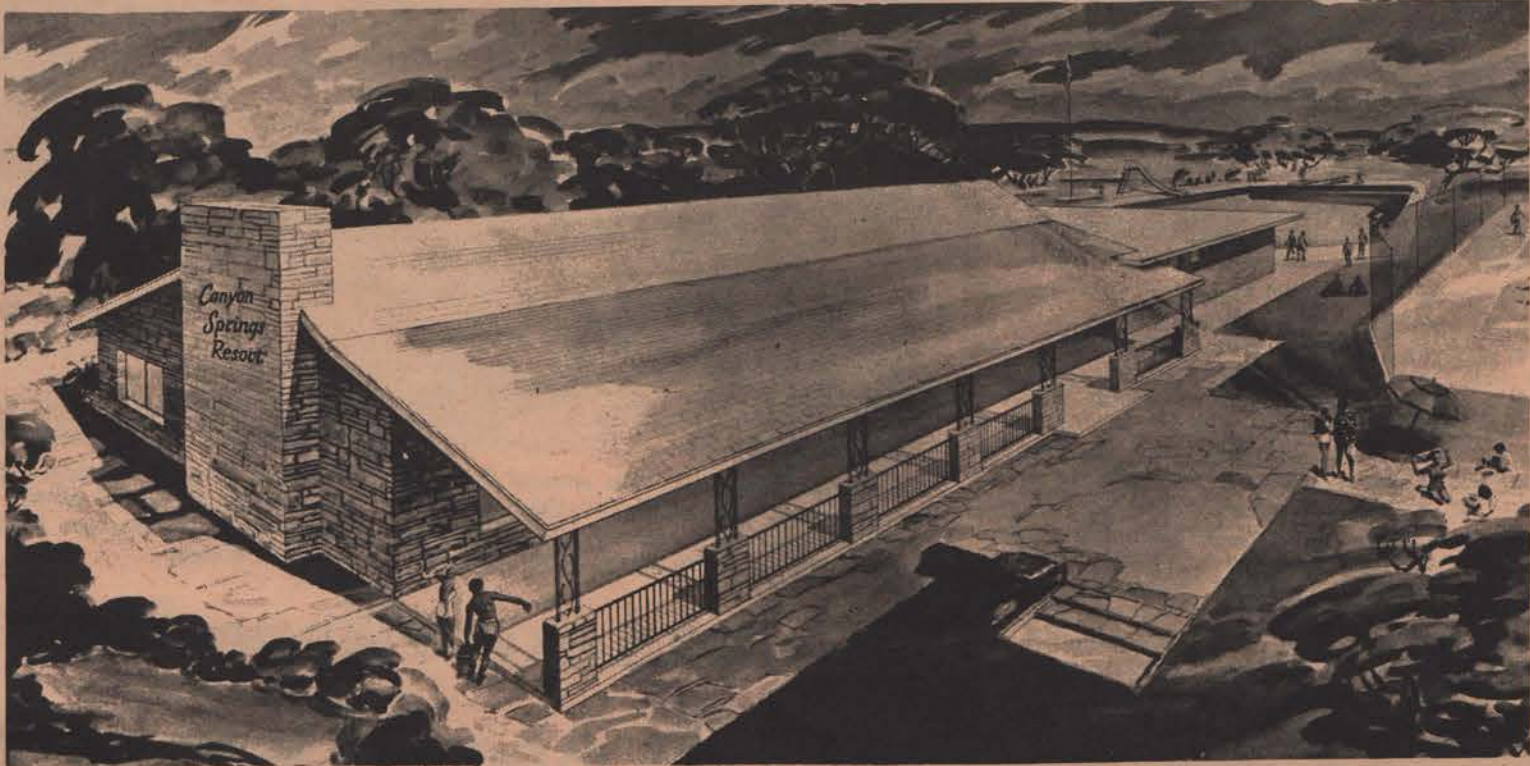
See
Westhaven
Startzville Area - Southside of lake

CANYON SPRINGS

Resort

**ANNOUNCES...
IT'S NEW**

CLUB HOUSE



**ANOTHER STRIDE FORWARD IN OUR PLAN TO MAKE CANYON SPRINGS RESORT
THE MOST COMPLETE AND ENJOYABLE LAKESIDE DEVELOPMENT ON NEW CANYON LAKE**

Only Canyon Springs Resort offers these features NOW!

- ★ Safety Engineered Roads
- ★ Water and Electric Systems
- ★ Swimming Pool
- ★ Fishing Coves
- ★ Beautiful Tree-covered Lots
- ★ Devil's Backbone Ridge Panorama
- ★ Tennis Courts
- ★ Softball Diamond
- ★ Club House
- ★ Recreation and Barbecue Areas
- ★ Rest Rooms
- ★ Boat Launching Facilities



CHOICE LOTS as little as

\$25 DOWN \$15 MONTHLY

Directions — From San Antonio — Drive North on Hwy. 281 (San Pedro) to Rte. 46 — turn right on 46 — then follow OUR sign to property office.

From New Braunfels — Drive west on Highway 46 about 10 miles then follow signs.

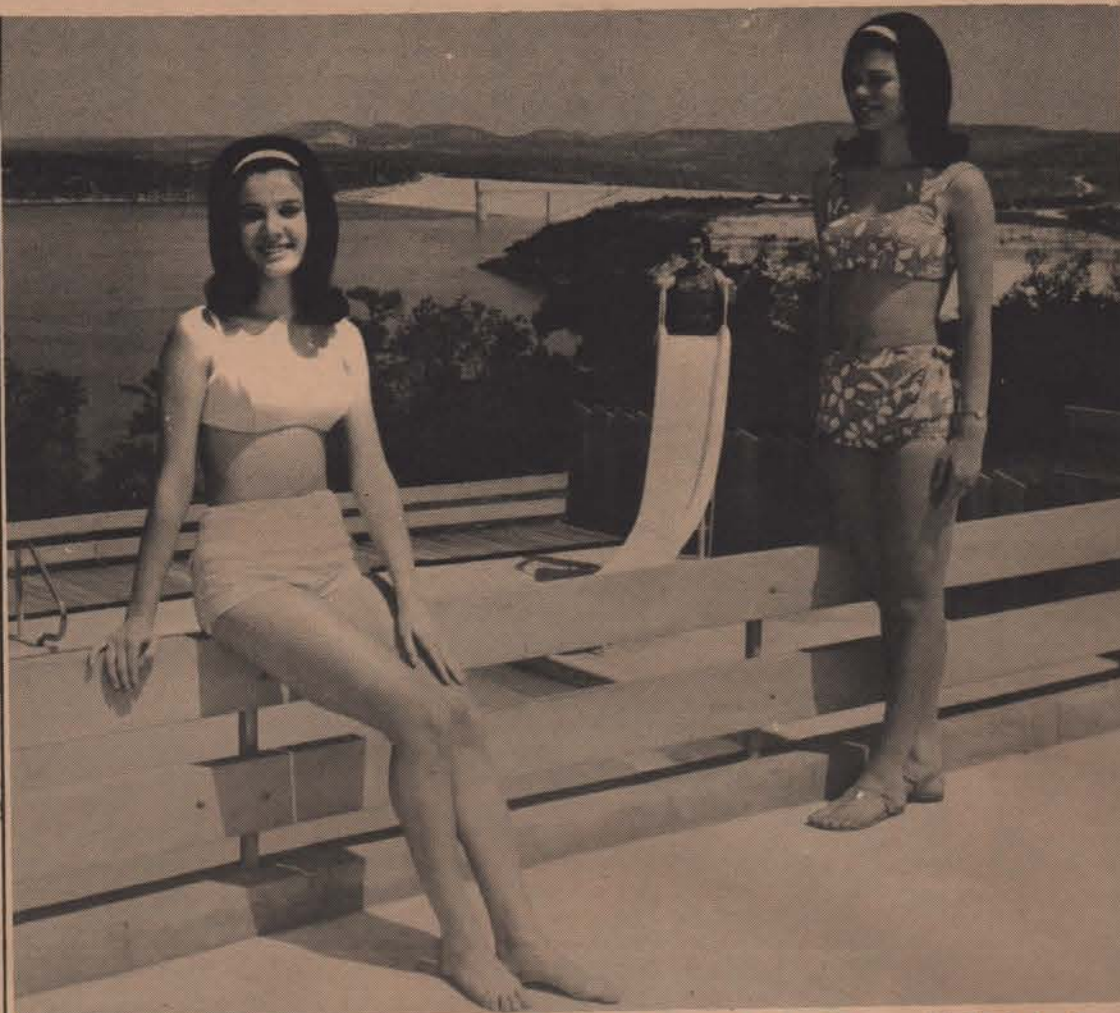




GIANT CYPRESS — Jerome Norris relaxes against the trunk of one of the giant cypress trees which line the riverside park of Canyon Corner Subdivision. The pretty girls are Lana Rheinlaender and Jenny Oberkamp. Here, two miles below Canyon Dam, the Guadalupe River runs clear and deep. Always an excellent source of bass and catfish, the river now is home to rainbow trout. Oaks and pecan trees also provide abundant shade in the subdivision, land which has been in owner Max Pape's family three generations. The wooded park has picnic tables on the river bank and a boat ramp to facilitate launching. Further downstream, below Sattler Road, Pape also maintains a camping ground with 3,000 feet of river front. There are facilities for trailers, barbecue grills, and picnic tables in a beautiful natural setting.



REED'S BOAT — A boatload of New Braunfels girls try out one of the sleek fiberglass Rivers crafts at Reed's Boat Storage and Marine Supplies on Crane's Mill Road, at Canyon Lake Mobile Home Estates. Reed, an engineer on the Southern Pacific RR, plans to retire in two years and move permanently to his mobile home.



POOL VIEW — From around the pool at Canyon Lake Village, residents of the village can look down upon Canyon Dam and its spillway as well as across

the lake. The development is high in the hills at the east end of the lake. In the foreground are Jacquie Buske, left, and De'Aun Kemp.

Canyon Lake Village Rises High Into Hills Above Deepest Water

In the high hills south of lower slopes. Canyon Dam lies Canyon Lake Village. Here at the deep end of the reservoir, boating, water skiing, and fishing are excellent. The development has its own boat ramp and permanent parks.

The varied terrain of Canyon Lake Village offers a wide choice of building sites — hilltop, hillside for split-level architecture, high plateau, and

Views are spectacular. From the swimming pool for residents, one looks down upon Canyon Dam and the spillway. To the northwest, Canyon Lake stretches out among the hills for nine miles.

Casual living is the manner of permanent and weekend residents.

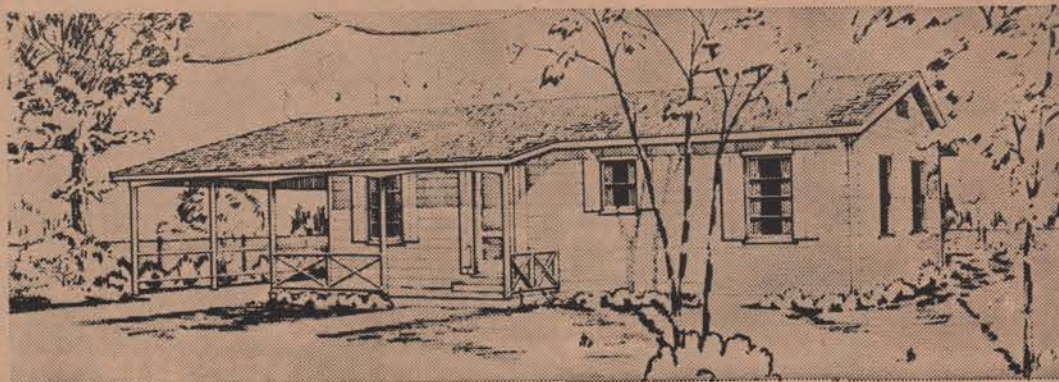
The entrance to Canyon Lake Village is on the loop road (FM

2673) west of Sattler Village. To reach FM 2673, follow the scenic Guadalupe River Drive, FM 306, or Highway 46 and Bear Creek Road.

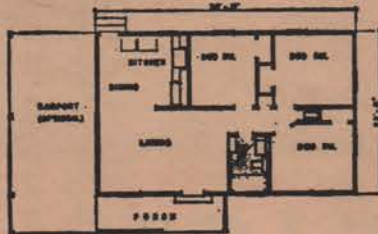
The spillway of Canyon Dam is located in a saddle hill on the right bank. It is about 1,100 feet long with an elevation of 943 feet above sea level.

BUY AN ETO (Easy To Own) HOME FOR THAT...

Lake Lot-No Money Down



MAPLE HILL



The 'MAPLE HILL'

Only \$6,125

Livable Stage

A low cost Three Bedroom House without sacrificing gracious living. Many other plans to choose from.

BUILT ON YOUR LOT

National Building Centers, Inc.



Building Supplies and Service
Formerly WM. CAMERON CO. Lumber Yards
424 S. Castell Avenue, New Braunfels, Texas — Phone MA 5-2397

**Kermit & Lucilles
Cafe**

North of the Lake
On Hiway 306 Near 484

Short Orders

— Baits —

Picnic Supplies

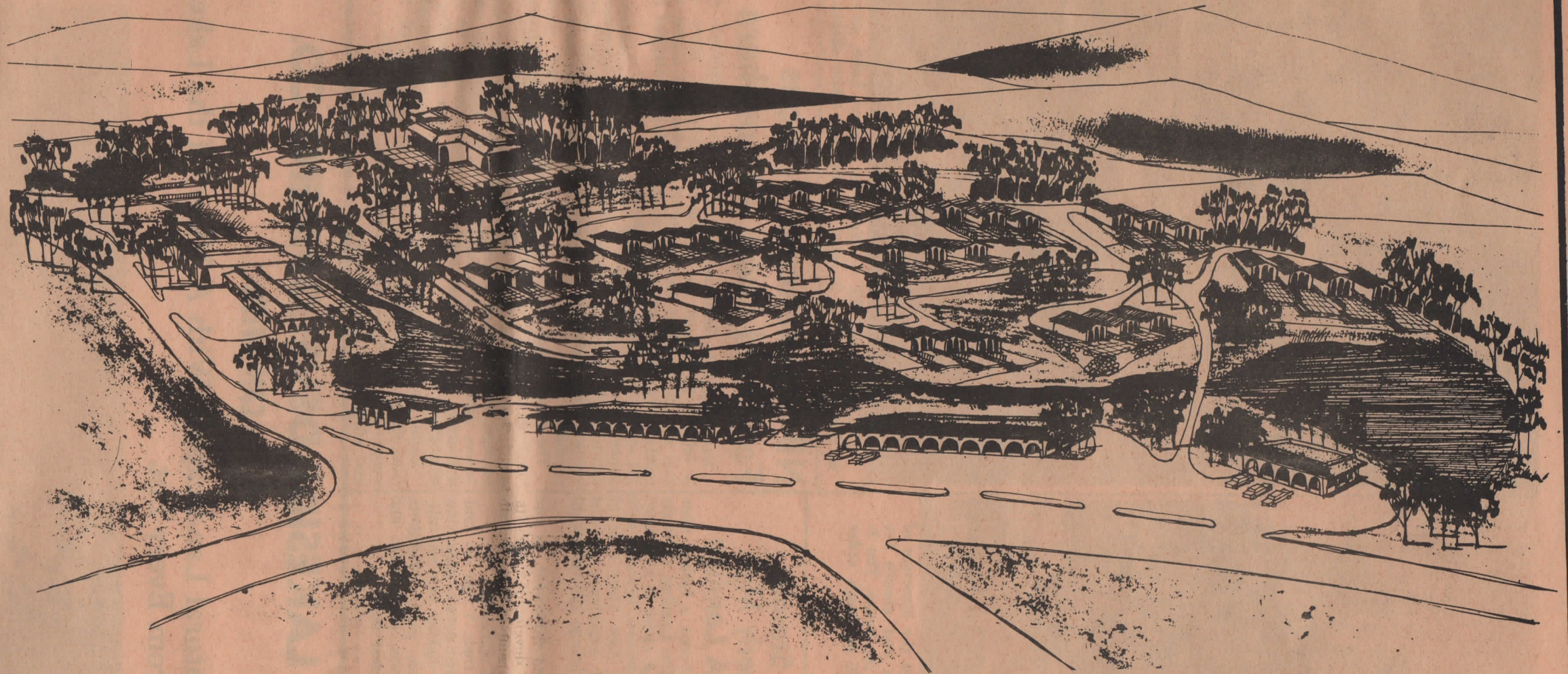
— Beer —



La Villa

This Beautiful Resort-Village will be situated on a 32 acre site at Canyon Lake in the Scenic Texas Hill Country.

Spanish architecture and decor throughout will have the atmosphere of romance and gracious living of Old Spain.



La Villa Lodge - Motel - Shopping Center - Split Level Restaurant

Lodge and Private Club:

100 Units - Putting Green - Health Club - Convention Center

Las Casitas [Little Houses]

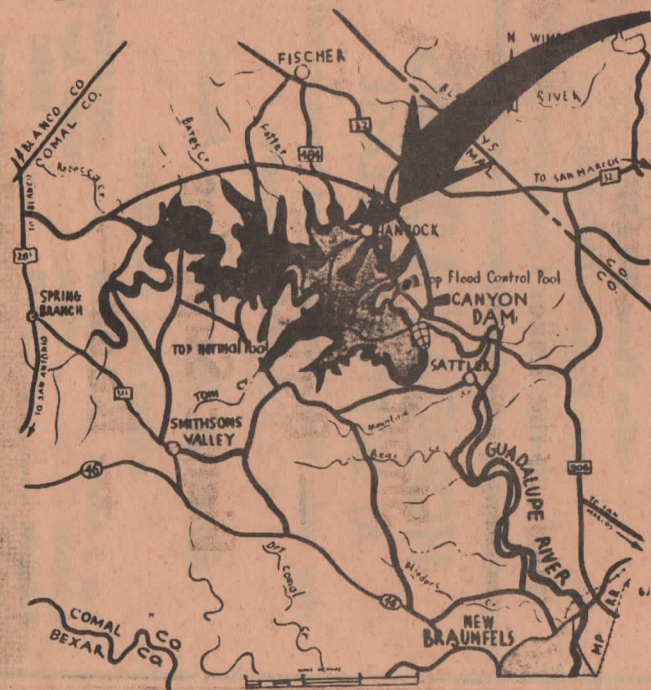
For Sale or Lease

2 & 3 Bedroom Homes - Private Patio - Individually Designed - Maid Service

Businesses Now For Lease:

- ★ Service Station
- ★ Motel
- ★ Restaurant
- ★ Liquor Store
- ★ Cantina
- ★ Barber & Beauty Shop
- ★ Laundromat & Cleaners
- ★ Flea Market
- ★ Gift Shop
- ★ Drive-In Grocery

For Information Write or Call:
La Villa Properties
 610 W. Alabama
 Houston, Texas 77006



HIGHWAY MILES TO DAM	
New Braunfels	17
San Marcos	24
Seguin	30
San Antonio	48
Austin	56
Waco	159
Houston	190
Fort Worth	250
Dallas	255



HILLSIDE HOME — The three-level home of Mr. and Mrs. Charles R. Rose in Canyon Lake Village was built by Helms Lumber Co. with a breathtaking view across the nine-mile length of the reservoir. The architect for Helms slept

out on the site to learn the direction of the prevailing breezes and absorb the view before designing the house. The 3-bedroom home is built of rough cedar and native stone.



EXCITING SPORT — Water in Canyon Lake, now as deep as 134 feet, is ideal for exciting water skiing.



SATTLER LANDMARK — The Helms Lumber Co. building at Sattler was once Valhalla Hall, scene of lively dancing for generations. The company prides itself on complete "turnkey" work, from planning to finish, even to carpeting on the floors. In Sattler five years and in the building business 25 years, Helms is also established in Wharton and New Braunfels and soon will open a sales office in Startzville.

Pete Stovall Formerly Mgr. Of SA Landing

Pete Stovall, a former manager of The Landing of Happy Jazz Band fame, is now operating Lakeview Drive-In with his wife, Avis. They have 15 years of experience in San Antonio lounge and restaurant work.

The establishment is on North Shore Road at the entrance to Canyon Park and the proposed marina.

Open from 7 a.m. to midnight seven days a week, they dispense fishing bait and supplies, gas, picnic provisions, hamburgers, sandwiches, and ice and rent boats.

NB Smokehouse Famous For Good Food, Atmosphere

New Braunfels Smokehouse is famous throughout the nation for its excellent smoked meats. Good food and charming atmosphere make a Smokehouse stop a must for IH 35 travellers. It is a regular favorite of New Braunfels area residents.

The Smokehouse has a tremendous mail order following which orders mountains of sausage, ham, smoked turkey, bacon, dried beef, and other delicacies at Christmas and throughout the year.

Hams and sausages hang from the rafters in the picturesque shop at Highways 81 and 46, just off the express-

way. In the restaurant, costumed waitresses serve patrons. Tables and chairs are an interesting countryfied collection.

Wild rice or buckwheat pancakes with blueberry syrup and sausage is a good way to start off the day. At noon, you can indulge in the smoked meats with all their accompaniments.

For a "light" supper, there are hearty soups and their own apple dumplings. Be sure to try the huge sandwiches of homemade bread of smoked turkey or multi-layered and paper-thin corned beef.

Charles R. Rose

Insurance - Real Estate

★ GREAT AMERICAN of Dallas
Life - Hospitalization - Disability

Representing: ★ LEE INSURANCE AGENCY
Fire - Auto - Boat Insurance

★ SATTLER VILLAGE
REAL ESTATE

Office Phone WO 4-3332

Home Phone — WO 4-3440

"First in Service, because I put Service First!"

HOLIDAY LODGES At SATTLER VILLAGE

Now under New Ownership and Management
J. B. OSBORN - proprietor

Rental by Day, Week, or Month

RATES FOR 1966 (Daily)

2 or 3 Adults	\$12.00	CHILDREN
4 Adults	\$14.00	Under Age 12
6 Adults	\$16.00	FREE!

SPECIAL RATES BY WEEK OR MONTH!

LAKESIDE DEVELOPMENT CO.

CAN OFFER

Natural Landscaping With A View Of the Lake
From Every Lot.



Phones - Electricity And Good Water Available.
On North Side Of The Lake. Wonderful South-
easterly Winds.

P. O. Box 284

New Braunfels, Texas

MA5-6716

MAKING THE MOST OF NATURE'S BEST



Dropping the Trout in the Guadalupe River are (l to r) Rudy Wesch, Lone Star Beer driver-salesman; Jim Thomas, the Lone Star Sportsman, whose TV show is seen throughout Texas; Harry Jersig, president; and Monroe Nuhn, Comal County Lone Star Beer distributor. Below, Lone Star Brewing Company has freed 10,000 fighting Rainbow Trout in the Guadalupe River below Canyon Dam and they're waiting to be caught.



The talent of men and the efficiency of modern machinery have produced another great natural resource for the Lone Star State — Canyon Dam and Canyon Lake.

The Lone Star Brewing Company salutes the men whose vision made this great project a reality — another project which makes the most of nature's best.

OPERATION X-BOW

The Lone Star Brewing Company takes pride in providing for sportsmen the first full scale Rainbow Trout fishing in Texas — Operation X-Bow. 10,000 mature Rainbow Trout have been placed in the sparkling white waters below the tail race of Canyon Dam by the Lone Star Brewery — a project which opens a new world of fishing pleasure — a project that makes good use of nature's wonderland. The brewers of Lone Star Beer wish all of you "good fishing!"



*makes the most
of nature's best*

LONE STAR BREWING CO. SAN ANTONIO/OKLAHOMA CITY

Anglers Find Fishing Great On New Lake

Canyon Lake is one of the liveliest spots for an angler in Central Texas and probably will remain so for some time to come, according to Richard White, state biologist.

Biting hungrily in the big lake are black bass, catfish, and perch. Downstream below the dam rainbow trout as well keep anglers happy.

Creel census and sein samplings by the Texas Wildlife and Parks biologists show the fish are thriving in Canyon Lake, White said.

Bass, including native stock from the original river source and 200,000 large fingerlings released in 1956, are weighing heavy on the line. Last year's fingerlings are spawning this spring.

Best part of fishing at Canyon Lake is its accessibility. It is easily reached from nearby metropolitan centers. And once in the area, anglers are readily on location.

Ramps are available for launching boats and bank fishing is very rewarding since, in many areas, the shore drops

(See "Fishing" Page 21)



BEFORE (1959) — An aerial view of the Canyon Dam site from an angle similar to that of the cover photo shows signs of earliest construction in July 1959, six months after it began.
(Roger Nuhn Photo)

Public Park Area Covers 1,566 Acres

Recreational facilities at Canyon Dam and Reservoir include 1,566 acres of park area. Seven park areas are being developed; another is to be developed when the need arises.

Located throughout the seven park areas are 635 picnic tables, with approximately 200 shelters. Eleven water wells provide drinking water for the numerous visitors expected to flock to the newly completed reservoir this summer. Twenty-six boat ramps will provide easy access to the water for the dedicated fisherman, water skiers, or boaters.

There are 35,000 sq. yds. of parking area available, with approximately 16 miles of paved roads.

Expenditures on recreational facilities, including the model Canyon Park, total \$1,839,000 through February of this year.

Rose, Osborn New to Sattler

Two new faces in Sattler are Charles R. Rose, insurance and real estate agent, and J. B. Osborn, proprietor of Holiday Lodges.

Rose, who has moved his family into a hillside home in Canyon Lake Village, has offices in Sattler Village. He represents Great American of Dallas.

Holiday Lodges are in the village on Sattler Road. The attractive individual lodges are built of stone. They will accommodate as many as six adults.

Catch limits on fish in Comal County are 15 bass per day per person and 25 catfish per day per person.



RELAX... ENJOY FUN IN THE SUN

at your wonderful vacation and retirement home at

HORSESHOE FALLS ESTATES

"The Land of Living Dreams"

This is it! Your opportunity to choose your own tree-studded home site on the banks of the beautiful Guadalupe River, just below Canyon Dam and Lake. Fishing, swimming, boating, FUN! Sensible sound restrictions. Perfect for summer . . . or permanent home. Phone New Braunfels Area Code 512 MA 5-6229 . . . wire or write for detailed information.

P. O. Box 5, New Braunfels, Texas 78130



DIRECTIONS: Take U.S. Hwy. 90 West or 90A West to Seguin; turn onto State Hwy. 46 to New Braunfels. Where Hwy. 46 crosses Inter-

state Hwy. 35 (old U.S. 81), turn right and drive 3 miles to F.M. 306. Turn onto 306 and drive 15 miles to entrance of Horseshoe Falls Estates.

Lots as little as **\$595⁰⁰**
\$20 down and **\$10** per mo.

Fishing Great

(Continued from Page 20)

off quickly into deep water.

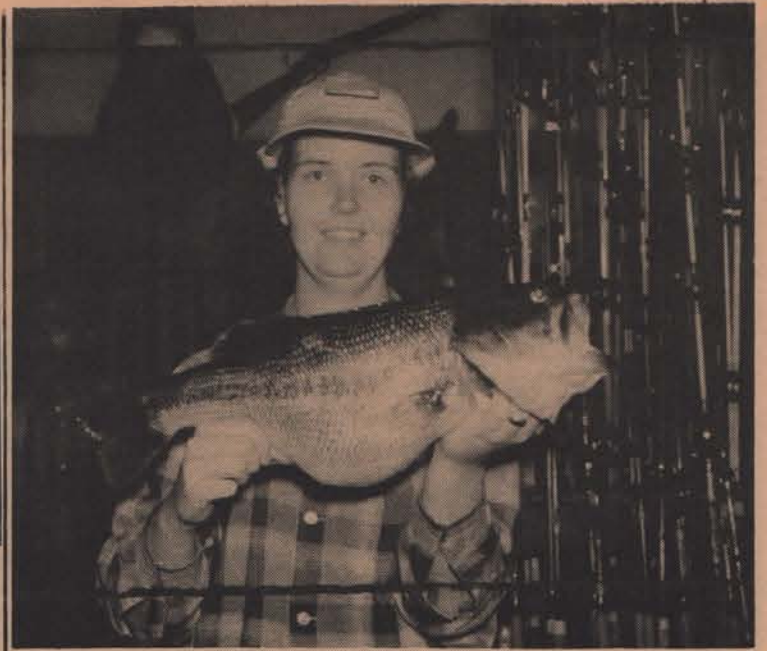
An estimated 85 per cent of the Canyon fishermen are from the nearby San Antonio area, but anglers come from a wide area. Houston contributes a substantial number, according to White.

Canyon Lake provides a fishing bonanza. Food is plentiful, and the vast lake provides a varied and adequate habitat. Conditions will continue to improve as the lake fills to conservation pool level, according to state biologists.

Annual rainfall of Comal County is 32.54 inches.



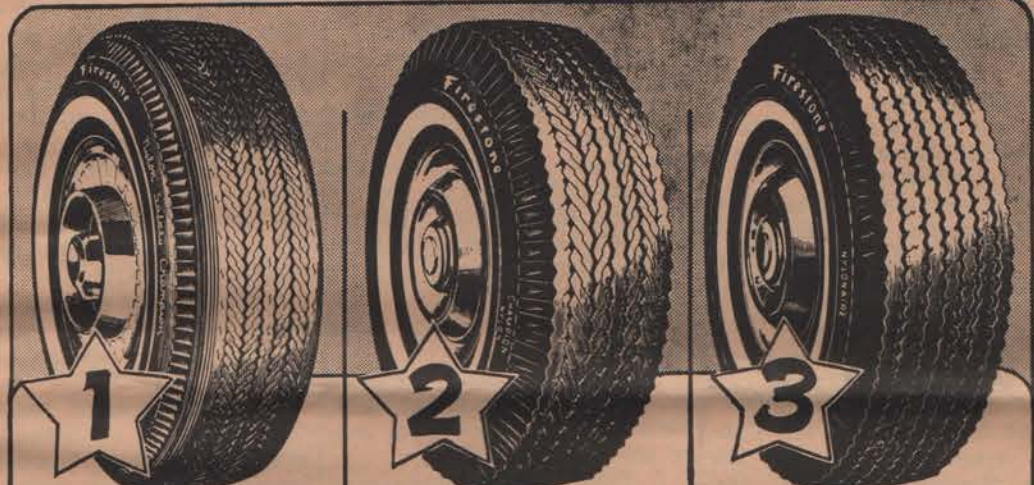
BIG BASS — Happy anglers, above and left, display healthy bass caught recently in Canyon Lake, one of the most rewarding fishing spots in Central Texas and growing better steadily. (Fred Maly Photos)



QUALITY COMES 1ST AT FIRESTONE

Firestone NYLON TIRE SALE!

Your Choice of 3 Great Firestone Nylon Tires at Discount Prices!



1 Firestone Safety Champion Nylon
★ 25% more mileage than the Champion

2 Firestone Champion Nylon
★ 20% more mileage than the Nylonaire

3 Firestone Nylonaire
★ Safety-fortified nylon for safety and durability

SIZE (Size listed also replaces size shown in parenthesis)	TUBELESS BLACKWALLS		
	Advertised "No Trade" Price	Advertised "Trade-in" Price	SALE PRICE with "Trade-in"
6.00-13	\$20.45	\$17.45	\$15.70
6.50-13	21.65	18.40	16.55
6.50-15	24.05	20.55	18.50
7.50-14 (7.75-14)	24.50	20.75	18.70
7.50-15 (7.75-15)	28.05	23.80	21.40
8.00-14 (8.25-14)	30.80	26.30	23.70
8.00-15 (8.25-15)	34.30	29.30	26.40
8.00-15 (8.25-15)	29.70	26.70	24.05

NO MONEY DOWN
Take Months to pay

Charge	Payment
\$50.00	\$5. per mo.
75.00	7. per mo.
95.00	9. per mo.

FULL LIFETIME GUARANTEE against defects in workmanship and materials and all normal road hazard injuries encountered in everyday passenger car use for the life of the original tread design. Replacements are pro-rated on tread wear and based on current Firestone retail price at time of adjustment.

Your safety is our business at Firestone!

Westinghouse 2-DOOR
AUTOMATIC DEFROSTING IN THE REFRIGERATOR SECTION
HUGE FREEZER
100 LB. CAPACITY

PLUS: FULL WIDTH CUPPER 2-POSITION SHelves, HANDY BUTTER-KEEPER, INTERIOR LIGHTS
5 FULL YEARS PROTECTION

218⁹⁵
WITH OPERATING TRADE

NOTHING DOWN—EASY TERMS

Westinghouse BIG 15
LAUNDROMAT

HEAVY DUTY

- SUPER DELUXE
- FEATURES AT A TRUE VALUE PRICE!

EXCLUSIVE 2 YEAR PARTS WARRANTY 5 YEARS ON TRANSMISSION

189⁹⁵
WITH OPERATING TRADE

NOTHING DOWN—EASY TERMS

Westinghouse DELUXE
PROVEN BEST IN 100° TEXAS HEAT

12 CU. FT. CAPACITY
SPACIOUS FRESH FOODS REFRIGERATOR

WITH BIG 75 LB. FREEZER SECTION

NOTHING DOWN—EASY TERMS

179⁹⁵
WITH OPERATING TRADE

BRAKE ADJUSTMENT

We'll adjust your brakes for full contact to drums, add brake fluid and repack front wheel bearings.

99^c Any American Car

WHEEL ALIGNMENT

Get safer, easier steering and longer tire life for only

\$6⁵⁰ Most American Cars

Parts extra, if needed

WHEEL BALANCE

Prolong the life of your tires for only

\$1⁴⁹ PER WHEEL

WE ALSO SERVICE
Air Conditioners, T.V.'s (Black and White or Color), All Major & Small Appliances and Lawn Mowers

Michna & Kraft Firestone Store

900 W. San Antonio St.

New Braunfels, Texas

MA5-4619



HOME IN OAKS — Mr. and Mrs. Dan McDonough of San Antonio enjoy the comfort of their home in The Oaks. He is with McDonough Bros. Asphalt Products. Guests enjoy the view of the lake from the porch.

Southside Site of The Oaks At Canyon Lake's Widest Span

The Oaks, a development at the widest part of Canyon Lake, looks out from the south shore across a five-mile expanse of blue water among the green hills of Comal County.

Here there is abundant opportunity for skiing, boating, and fishing. Spacious parks give residents additional recreation area.

Tree-covered homesites provide a cool, relaxing atmosphere, shady sites where residents enjoy Hill Country breezes and watch the water skiers and sail boats pass by.

Eighty per cent of Comal County is within the Texas' Hill Country; the rest is undulating plains.

Owners of The Oaks are long-time Comal County residents who began work on the development before construction of Canyon Dam was started.

They have planned carefully to create a permanent subdivision. Acreage tracts, as well as lots, have water access.

Homemade Bread At Kuntry Kitchen

Homemade bread is served exclusively at Smilew's Kuntry Kitchen at the junction of FM Road 306 and Sattler Road. They make their own pies and cakes, and steaks are their speciality.

M/Sgt. and Mrs. Durwood Smith operate the cafe and Elvis Lewis is a stockholder in the venture.

Paved roads wind through the hills and slopes of The Oaks, a peaceful harbor in this scenic new recreation land.

Easily accessible, The Oaks can be reached from IH 35 or US 281 by following State Highway 46 to Bear Creek Road which leads to the entrance.

Mrs. Smith is also the Canyon Area columnist for the New Braunfels Herald. The Smiths have two bright-eyed youngsters they adopted a few years ago in Korea.

Canyon Dam is 30 miles from Seguin.



SAILBOATS — These sailboats on Canyon Lake have right-of-way always over motor-powered boats.

Violator of Corps Rules May Have Boat Barred

Boating manners have been set down by the US Corps of Engineers for navigators on Canyon Lake.

The rules are not just polite suggestions. They are federal regulations. Failure to abide by them will result in the offender's boat being barred from all Corps reservoirs in the Ft. Worth District, a total of 17.

Most important of the rules in brief:

1. When boats approach head on, each must turn to the right, passing on the port (left) side of the other.

2. Power boats approaching each other head on must signal with one short, distinct whistle blast and then pass on the port side.

3. If approaching boats are well to the starboard (right) side of each other, either shall give two short blasts of her whistle which the other must answer with two blasts and then pass each other on the starboard side.

4. A boat overtaking another shall keep out of its way, passing to the left if that side is in the clear.

5. When boats approach each other at right angles or obliquely with risk of collision, the craft which has the other on portside shall maintain its course and speed.

The craft which has the other on her starboard side shall keep out of the way of the other and slow down or reverse if necessary.

6. Powerboats moving under power shall keep at least 50 feet away from occupied row-boats.

7. Sailboats shall have the right-of-way at all times, even when approaching powerboats because of lesser ability to change course and speed.

8. All motor craft must have mufflers. An exception may be granted by the project engineer when races are held.

9. In narrow channels, keep to the right of the middle.

10. When approaching or passing smaller craft, reduce speed so that the wake does not create a danger.

11. Maintain slow speed in harbors and near swimming areas.

Tom Creek Stables

Cranes Mill Road - 1 Mile North of Startzville

Scenic Trail Rides
Riding Instructions
Boarding Stables

USED Gentle Horses Bought & Sold

For further information Call W. R. Hughey, Manager

Res. Phone 497-2180

Tom Creek Marine

Cranes Mill Road - Phone 497-2366

Factory Authorized Sales and Service
Service For JOHNSON Motors and Boats
Boat Storage - Boat and Motor Rentals
USED Boats & Motors Bought & Sold
For further information Call W. T. (Tom) Haley, Manager

THIS IS IT!

The *FINEST* for RECREATION
And WATER SPORTS!

Beautiful Home Sites
Ranch Size Lots
Water Front
Private Park
Fishing
Boating

HIGH COUNTRY!

MILDRED and HENRY SEMLER - owners

Let Henry show you how little it will cost
you to own a Hollywood Size Ranch!
CALL MA 5-3713, or SATTLER WO 4-3398



THE OAKS

One of the Meckel-built homes in The Oaks, a development on the south shore of Canyon Lake, is this modified A-frame vacation home of a Houston couple.

MODERN

L. A. Meckel CONSTRUCTION CO., INC.

General Contracting

Commercial - Residential

Historical Restoration

Skilled In Old German Craftsmanship

"Quality - Experience - Honesty Have No Equal"

Custom Designing

& Woodworking

NORTH SHORE

A contemporary home built by Meckel high on a hill in the Canyon Dam area is constructed of aged woods from ranch buildings which stood on the site of the dam for over a century.



750 Gruene Street
MA 5 - 4583
New Braunfels, Texas

CANYON LAKE HILLS

THE PLAYGROUND OF THE HILL COUNTRY

At CANYON LAKE

TREES ON EVERY BEAUTIFUL
LAKESITE



**LAKESITE
LOTS**

AS LITTLE AS

\$375

**\$20 DOWN
\$10**

MONTHLY



PLAN YOUR FUTURE NOW

NEW SWIMMING POOL NOW OPEN

Vacation-Retirement Investment



*PICNIC AREA
BLACK-TOP ROADS
PLAYGROUNDS
BAR-B-QUE PITS
RESTROOMS
WATER SYSTEM
LAUNCHING RAMPS
WATERFRONT PARK*

Courteous Guides are on the Property Daily and Sunday from 10 a.m. until Dark . . . Rain or Shine

From New Braunfels, take Highway 46 (Northwest) to Cranes Mill Road (sign at corner). Turn right and continue on Cranes Mill Road. Follow sign to Canyon Lake Hills.

From San Antonio, drive north on Highway 281 (San Pedro Ave.) to Highway 46. Turn right on 46, and follow the signs to Canyon Lake Hills.

IF YOU LIKE VIEW YOU'LL LOVE CANYON LAKE HILLS

LAKECROFT BEACH ESTATES, INC.